

Volume 2, Issue 18/March 25, 2005

Academic Information

Academic Enrichment Workshops

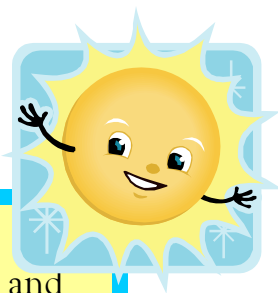
If Spring Break motivates you to improve your academics when you return in April, here's one idea. Attend the workshops offered by the Academic Enrichment Center. These workshops cover topics such as time management, note-taking, reading strategies, test-taking and preparing for finals. For a schedule, go to

<http://www.aec.udel.edu/workshops.html>.

Summer Session Books are Out!

Registration for UD's two summer sessions begins Monday, April 4. To see what's available, pick up a book outside 104 TNS or visit

<http://www.udel.edu/fanjoy/special-sessn.html>.



Classes end Friday after your last scheduled class and resume Monday, April 4 at 8:00 a.m.

*Have a safe and relaxing
spring break!*

Newsletter Guidelines

Talk of Townsend is produced every other week during the Fall, Winter and Spring terms. There are occasional exceptions, based on high-volume of announcements with certain deadlines. If you wish to submit an item for *Talk of Townsend*, please note the following:

- Deadline is Tuesday at 5:00 p.m.
- Items should be written in the format and style of other entries you see in the newsletter. Keep them brief, and be sure to include dates, times, locations and contact information.
- Do not format your announcement with bullets, fonts, highlights, etc. Text only, please.
- Do not forward long announcements, job postings, emails, etc.
- Put "Talk of Townsend" in the subject line of your email.
- If your item was submitted and doesn't appear in the newsletter, please follow up with Karen Aniunas at kra@udel.edu immediately.

*Thank you for your support of the
newsletter!*

Study Abroad News

Upcoming programs in Australia (ANSC/ATED), Ecuador & the Galapagos (ENWC/PLSC), and Tanzania (ENWC) are especially designed for CANR majors.



Come learn more about each individual program at an interest meeting - check our website at www.udel.edu/studyabroad for a full list of meeting dates, times, and places, as well as detailed information and an on-line application.

Important Study Abroad

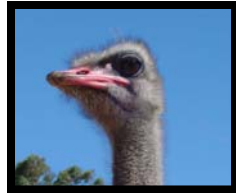
Application Deadlines:

Winter 2006: 5 p.m. March 25, April 29, or September 26 (depending on program)

Spring 2006: 5 p.m. October 14

Go Down Under Next Winter

Are you looking for somewhere warm to go next winter? Interested in learning about cattle, sheep, kangaroos and koalas? Wondering how



Australian Parliament mimics its British predecessor? Come with us for Winter Session '06 in New South Wales, Australia. You will study local and international animal production and develop leadership skills through hands-on experience, farm visits, field trips and sight seeing. We'll have field trips to the Riverina District, the outback, and Snowy Mountains. While in Sydney, we'll visit the Taronga Zoo and attend a performance at the infamous Sydney Opera House. If you like wildlife, animal agriculture and the beach, you'll love Australia.

Our next interest meeting will be **Monday April 4th, 6:00 - 7:30pm** in 132 TNS. Come see images from our last excursion and learn about our plans for the upcoming program. For more information, contact Dr. Bill Saylor at bsaylor@udel.edu or Dr. Pat Barber at pbarber@udel.edu.

Internships and Summer Experiences

More information on these and other internships is available in 104 TNS Hall.

UD Cooperative Extension

announces the 2005 *Extension Scholars; Student Intern Program* for undergraduate (summer following sophomore year and beyond) and graduate students. This program (to be conducted from May 31-August 12) is designed to follow the service-learning model whereby interns will have an opportunity to become fully engaged in organizational service experiences that: are integrated into the academic curriculum; meet the needs of a community; provide structured time for reflection; and help foster civic responsibility. A capstone experience will be part of this year's program.

Up to five scholars will receive a stipend of \$3000 and, if needed, an allowance of \$500 for job-related travel and/or housing. Location of internships will be Extension offices on the UD and DSU campuses and/or in New Castle, Kent and Sussex Counties. Applications are available in 104 TNS or by emailing shurt@udel.edu. **Deadline is April 6.** Selections will be announced by May 1.

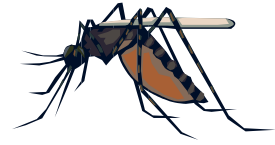


More...

The DE Department of Agriculture is hiring Soybean Rust Survey Technicians. Responsibilities include: systematic daily statewide surveys of soybean fields and sentinel plots for soybean rust, soybean pod borer and soybean aphids from early June through September. Individuals will be responsible for field surveys, collection of suspect specimens, geo-referencing, and daily submission of data. Portions of the survey may focus on additional crops or hosts. Training will be provided by the DE Dept of Ag and UD. Vehicles provided. Applicants should have good computer skills, enjoy outside work, and work independently. Salary: minimum of \$10 per hour - commensurate with experience; seasonal positions. Contact Randolph Ciurlino by **April 1** to apply, at 302-698-4500 or Randolph.Ciurlino@state.de.us

The UD Department of Plant & Soil Sciences has a summer position available involving: Processing of leaf samples from various ornamental plant specimens for possible infection with fungus *Phytophthora ramorum*. ELISA will be done for leaf samples from statewide surveys of container grown woody ornamentals, along with media preparation, isolation of fungal pathogens, and DNA extraction. Applicants should be familiar with sterile techniques for working with microorganisms. **Position available:** May 10, 2005. Number of hours per week to be determined. **Salary:** \$8 per hour - seasonal position. Contact Nancy Gregory at 831-1390, ngregory@udel.edu. **Deadline is April 20.**

DNREC/Mosquito Control is hiring field inspectors and virus surveillance/light-trap collectors for the summer. Work location is in Glasgow, DE, 10 minutes south of UD. Apply by filling out a State of DE Employment App at www.dnrec.state.de.us; look for DNREC Job Postings and download the application. Submit the completed application with a copy of your driver's license, resume, and Social Security card to DE Division of Fish and Wildlife, 2430 Old County Road, Newark, DE 19702 by **April 15**. For more info, see the Summer Jobs book in 104 TNS and the bulletin board outside 104.



Lums Pond State Park is looking for a Summer Camp Director and Asst. Director. Applications are currently being accepted via mail or fax to the contact below. Please include cover letter, resume & references to: Angel Rosauri, Nature Center Manager, Delaware State Parks, 425 Wedgewood Road, Newark, DE 19711, Fax (302) 368-6901.

Landscape Crew Member position for April through November. Description: Provide landscape maintenance to mostly high-end residential homes, near campus (Hockessin, Landenberg, Pike Creek). Grass cutting w/ zero-turn mowers, edging, mulching, trimming trees & shrubs, tree & shrub installs etc. Must have valid drivers license. Available 7:00 -4:00 Monday- Friday Can be flexible with Spring & Fall class schedule. Starting pay \$9.50/hr. review after 30 days. Contact Dave @ 302-740-8706 or 302-234-1600.

Delaware State Parks

AmeriCorps Programs are National Service Programs that teach and educate visitors about the many natural, historical and cultural wonders in our parks by leading programs, tours, summer camps, and outreach activities. We provide volunteer members with a living allowance and educational scholarship and other benefits, like health insurance for full-time members, in exchange for service in Delaware State Parks. For more information go to

www.destateparks.com or contact Glen Stubbolo FAX (302) 739-3817 Email: Glen.Stubbolo@state.de.us

The Chambers House Nature Center at White Clay Creek State Park

is looking for two undergraduate students to assist our Naturalist with the Earth Explorers program, a bi-weekly environmental education class for home schooled children ages 6-15. The intern will be involved in lesson planning & assisting during class session. Many classes are taught outside on the trails and along the creek. The intern must be able to hike short distances carrying class supplies. This is an unpaid internship.

Review internship requirements in 104 TNS, and contact Danielle Downs at Danielle.Downs@state.de.us or (302) 368-6560 to set up an interview.

The Delaware Nature Society at the Ashland Nature Center & Coverdale Farm, Hockessin, Delaware is looking for *Environmental & Agricultural Education Instructors*. Weekday, weekend and evening opportunities are available to service Delaware Nature Society members, schools and public groups. Experience teaching children and natural history

background is helpful - training is provided. For details, call Michele Wales, Farm Program Coordinator at 302 - 239 - 2334 x 143 or visit www.delawarenaturesociety.org.

The Delaware Nature Society

at Coverdale Farm, Greenville, DE offers a three-month *Farm Education Internship*. This internship supports the daily operations of an educational farm program that services Delaware Nature Society members, schools (currently PK - 5th grade), teachers and the public. Interns assist in preparation and teaching of spring farm member and school programs, provide support to the Native Plant Sale and help maintain the teaching garden and livestock collection. This internship provides a small stipend and opportunity to gain college credit. Interested sophomore or junior students should contact Michele Wales, Farm Program Coordinator at 302-239-2334 x143 for further details.

Farm Assistant for Kent County (DE) farm.

June 1 - August 30 (flexible); Duties include: install and maintain professionally-designed landscape plan; assist with maintenance of property around the residence; establish, maintain and harvest a flower and vegetable garden; assist with duties at the Delaware Agricultural Museum and Village on request. \$10/hour. For description, see bulletin board outside 104 TNS.

The Delaware Water Resources Center



announces undergraduate internships in water resources for 2005-2006. Students receive a stipend of up to \$3500 and typically work ten weeks full-time during the summer and additional hours during the fall and winter as the individual project demands. Academic

credit for the internship is also possible but must be coordinated with the student's faculty advisor. Interns must submit a written report on their project and participate in a poster session at an undergraduate research conference in the spring of 2006. The application deadline is March 25, 2005. Visit <http://ag.udel.edu/dwrc/jobs.html> for the application and more information. Ask a faculty member with whom you'd like to work if they'd like to develop and mentor a project with you, or contact Amy Boyd at aboyd@udel.edu 738-6779 to discuss your interests.

Winterthur Museum, Garden and Library,

Winterthur, DE offers a Horticulture & Arboriculture



Internship Program. CONTACT: A. Shonie Castle, Route 52, Winterthur, DE 19735; 302-888-4830; jobs@winterthur.org
Deadline: March 31

Scholarships/Awards

The **Sprig and Twig Garden Club** is offering a \$1000 scholarship to recognize excellence in horticulture, plant science or related fields. Applications are available in 104 Townsend. Deadline is **April 15**.

The **National Poultry and Food Distributors Association** is offering scholarships to rising juniors or seniors majoring in food science, food & agribusiness management, resource economics, and animal science. Applications are available in 104 Townsend Hall and are due **May 31**.

The **Delmarva Flock Supervisors' Association** will offer at least one scholarship, between \$500 and \$1500, to a student interested in poultry science. More information and applications are available in 104 TNS. Deadline: **August 4**.

There isn't room in the newsletter for all the details on every job or internship announcement we receive. To do a thorough job search, be sure to visit the MBNA Career Services Center; check out the Career Shelf in 104 TNS; and read the TNS bulletin boards for additional postings and other important information.

Newsletter Submission Guidelines:

Talk of Townsend is produced **every other** Friday during the Fall, Winter and Spring terms, with occasional exceptions due to certain deadlines.

(Next issue is April 8, 2005)

Submissions of timely and general interest are welcome. Please submit your copy in a *brief* statement, including dates, times, locations and contact information, via Email to kra@udel.edu by **5:00 p.m. on the Tuesday before publication. Do not format your email with bullets and fonts; they will be removed.**

Information received after that time will be posted in the NEXT newsletter.

The Office of Academic Programs reserves the right to refuse or edit announcements.

*Talk of Townsend is archived on the Web at:
<http://ag.udel.edu/resources/talkoftownsend.htm>.*

The Office of Academic Programs &
Student Services
104 Townsend Hall
302/831-2508

<http://ag.udel.edu/aboutus/academicprog.htm>

Offering academic and support services to our undergraduates.

Dr. Tom Sims, Associate Dean for Academic Programs and Research

Karen Aniunas, Assistant Dean for Student Services

Karri Van Blarcom, General Advisor

Nancy Lynam, Staff Assistant

Come see us for help with:

- Junior Check-In and Senior Check-Out
- Good-Student Discounts for car insurance
- Approval for taking courses at other schools
- Changing advisors
- Late changes to registration
- Excused absence verification
- Personal situations affecting academics
- Scholarship support
- Problems with your transcript
- Questions about anything related to or impacting your academic life at UD!

We also have a career shelf with information on employment, summer jobs and internships.