

# Flower Power

**Objectives:** Students will learn the essentials of flower anatomy and diversity. Principles will be applied to basic floral design.

**Materials:**

- Foam flower parts with board
- Small flower container for flower arranging, one for each child
- Various silk flowers for flower arranging activity

**10 minutes; Birth Month Flowers**

For several minutes, ask students to name as many flower types as they can. See the 'Birth Month Flowers' worksheet and share with the students. This is a fun and interesting way to learn about different flower species!

**10 to 15 minutes; Parts of a Flower**

Discuss the parts of a flower and their functions. Using the flower diagram, pass out foam flower parts to the students and ask them to place in the correct place on the flower board.

**25 to 30 minutes; Flower Arranging Activity**

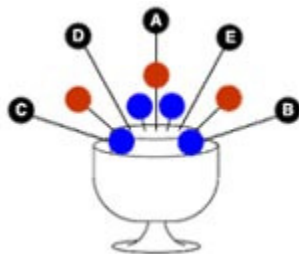
Using silk flowers, a container or vase, and Styrofoam, students will create a beautiful flower arrangement that will keep forever! Use these easy flower-arranging tips to help students create an arrangement they will love.

- Artificial materials and the dry-foam in which they are arranged are quite light in weight, so always weight your container with sand, pebbles or gravel at the bottom, to give greater stability. If using a clear container, add marbles, layers of interesting pebbles, or shells to hide the foam and give stability.
- Use wire cutters to shorten stems, as scissors may not be strong enough.  
Never use bare stub wires in an arrangement. This looks very unprofessional. Use green annealed wires or tape the wire using florists' stem tape.
- Artificial plants, pre-formed artificial bouquets and foliage can be split into single stems for individual arrangements.
- Think about the way each type of flower or foliage would usually grow, and gently arrange the stems of the flowers and leaves so that they look natural, before inserting them into the foam.

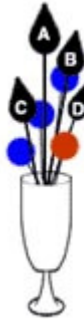
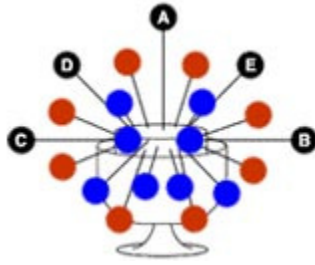
- When using clear containers, add marbles, layers of interesting pebbles, shells, raffia, pot-pourri or moss (natural or dyed) to hide the foam.
- If your arrangement is to be permanent, then dip stems in pan glue, white glue or hot glue before inserting them into the foam for greater stability and permanence.
- Regularly use a hairdryer on a low setting to blow off any dust from the arrangement.

#### SIMPLE FLORAL DESIGN RULES:

1. Flower arrangements can be simple or complex. Simple designs are often more elegant and are easier too. Encourage students to use large flowers and blooms minimally.
2. Match the flower type to the style of design you have in mind. Use sunflowers or wildflowers for an informal design and roses or other elegant flower for a formal design.
3. Don't limit yourself to flowers. Floral material is more than just blooms. It includes herbs, veggies, fruits, cones and seedpods of all sorts, as well as foliage and branches. Encourage students to use this media as well in their designs.
4. Have a shape of the arrangement in mind such as a pyramid or a ball shape. Shorten the stems to fit the general shape. Make sure the flower faces outward and it is at the right angle for your shape.



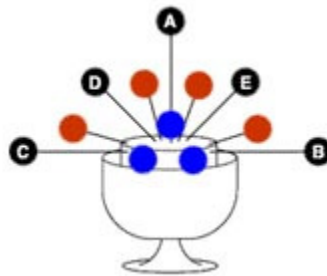
Placement of flowers. A fan arrangement.



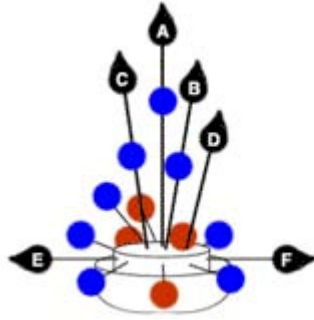
Placement of  
flowers.

A vertical  
arrangement.

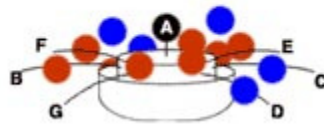
Placement of flowers. A circular arrangement.



Placement of flowers. A triangular arrangement.



Placement of flowers. An inverted T arrangement.



Placement of flowers. A horizontal arrangement.

5. Use the largest flowers along the bottom of your arrangement.
6. Work with one flower at a time. Don't bunch the same flowers together in one place; try to spread out each flower throughout the arrangement.
7. Use all the flowers, putting them into the spaces. Then, fill up the holes with some greens. Make sure the greens don't stick out; they should just come to where the shape of your flowers ends.
8. Flowers should be of the correct scale to the type of container you have chosen to use. Do not choose tall flowers for a short vase, as the arrangement will appear top-heavy. Conversely, do not use small flowers for a large container, as the eye will be drawn to the vase and not the flowers.

a. Container Ideas

- i. Vases (all shapes and sizes)
  - Small or medium decorative boxes
  - Baskets (lined with plastic)
  - Decorative tins
  - Bowls
  - Water pitchers

Tea pots

Clay pots

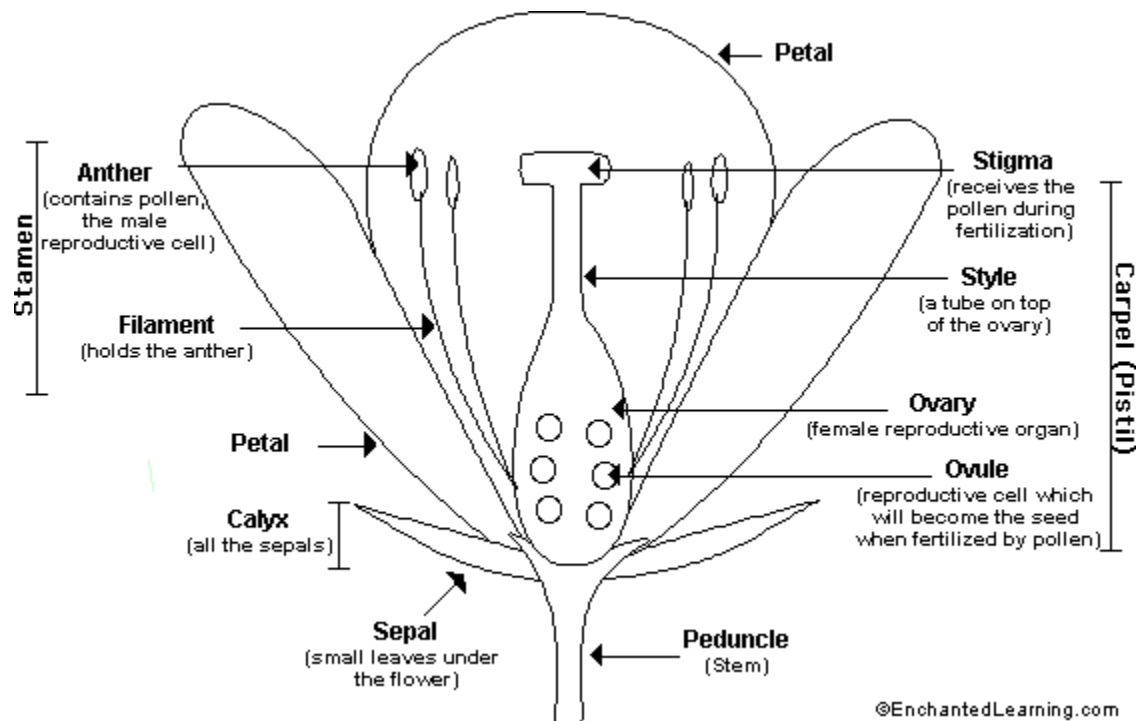
Galvanized tin buckets or watering cans

Mugs

Cake plates and other shallow dishes

9. The arrangement should appear to be balanced and proportional. To achieve balance when arranging, place a single flower in the center first. Then place similar flowers evenly around the central point. Fill in the spaces with different flowers of similar color and shape.
10. Use flowers with complementing colors in your arrangement.
11. Keep in mind the intended use of the arrangement. Will it be against a wall? If so, flowers should face in one general direction and the arrangement should have a visible front and back. Will the flower be placed as the centerpiece to a table? Centerpieces should be visually appealing from all sides and flowers should face outward in all directions. There should be no front or back; the arrangement should appear similar if viewed from all directions.
12. Be creative and have fun!

# Flower Anatomy



## BIRTH MONTH FLOWERS:

Month	Flower	Color	Meaning
January	<u>Carnation</u> or <u>Snowdrop</u>	Black, Dark Blue or Red	Fascination; Devoted Love / Consolation; A Friend in Adversity
February	<u>Violet</u> or <u>Primrose</u>	Violet, Sky Blue or Yellow	Modesty; Faithfulness; Virtue / Young Love
March	<u>Daffodil</u> or <u>Jonquil</u>	White or Light Blue	Regard; Devotion / Affection Returned; Sympathy
April	<u>Daisy</u> or <u>Sweet Pea</u>	Yellow, Red and Colorless	Innocence; Youth; Purity / Goodbye; Blissful Pleasure; Departure
May	<u>Lily of the Valley</u> or <u>Hawthorn</u>	Yellow, Red and Green	Sweetness; Humility; Return of Happiness / Fertility; Hope
June	<u>Rose</u> or <u>Honeysuckle</u>	Light Blue, White and Cream	Love / Devoted Affection
July	<u>Larkspur</u> or <u>Water Lily</u>	Green, Russet and Red	Laughter / Purity of Heart
August	<u>Gladiolas</u> or <u>Poppy</u>	Orange, Red and Light Green	Strength of Character; Sincerity; Generosity; Natural Grace /

			Eternal Sleep; Imagination; Oblivion
September	<u>Aster</u> or <u>Morning Glory</u>	Brown, Deep Blue	Symbol of Love; Daintiness / Talisman of Love; Affection
October	<u>Calendula</u> or <u>Cosmos</u>	White, Yellow and Varied	Joy / Modesty
November	<u>Chrysanthemum</u>	Dark Blue, Red and Yellow	Cheerfulness; You're a Wonderful Friend; Rest; Lovliness; Abundance; Wealth
December	<u>Narcissus</u> or <u>Holly</u>	Indigo, Green, Greenish-Blue	Stay as Sweet as You Are; Egotism; Formality / Foresight, Good Wishes