



In This Issue

- In The News
- Native Delaware Column
- Looking Ahead
- Director's Journal
- On the Cutting Edge
- Grants

Cooperative Extension

[Cooperative Extension Home](#)

[New Castle County Extension](#)

[Kent County Extension](#)

[Sussex County Extension](#)

[Delaware 4-H](#)

Related Links

[Friends of Agriculture](#)

[Horizons](#)

Malone Honored for Public Service

George "Bud" Malone has had an enormous impact on the poultry industry and the economy of Delaware agriculture. During his 31-year career as a UD poultry scientist, Malone's research and outreach efforts have resulted in significant and positive impacts for the industry and region. He has developed creative and innovative solutions to environmental issues associated with poultry production. One such ground-breaking practice –using trees around poultry houses as filters for dust, ammonia and noise-is being used as a model in poultry areas nationwide and has helped resolve conflicts between farmers and non-farm neighbors. Malone played a critical role during Delaware's 2004 Avian flu outbreak. His strategy for containing the virulent virus by in-house composting halted the spread of disease, and his innovative concept for alternative depopulation methods will greatly reduce human exposure to the virus. Malone is recognized as a leader in applied poultry research, as is evidenced by his many awards for outstanding service and his high demand as a speaker throughout the nation.



The winners of the 2006 Ratledge Family Awards for Delaware Public Service are (from left) John Talley, director of the Delaware Geological Survey; Kevin Vonck, senior research assistant and deputy state water coordinator; and George "Bud" Malone, UD poultry scientist and extension poultry specialist. UDaily 10.11.06

Delaware Cooperative Extension



"Building Effective Partnerships" 2006 Delaware Cooperative Extension Annual Conference will be held on October 19 at the Modern Maturity Center in Dover. Registration and continental breakfast will begin at 8:30 a.m. and the conference will begin at 9:00 a.m. with opening remarks by Dr. Jan Seitz, University of Delaware and Dr. Dyremple Marsh, Delaware State University. Keynote speakers will be **T. Scott Gross**, author of the book **"Positively Outrageous Service"** and **Dr. William A. Guillory**, co-author of **"Empowerment for High-Performing Organizations."** The day will close with a special reception honoring our award recipients and significant partners to Delaware Cooperative Extension. For conference registration please contact Alice Moore 302-831-2504 or email ammoore@udel.edu.

Friends OF Agriculture

The popular Breakfast Series is off to a great 2006-2007 season as **Dave & Mitch Woodward** started the series off with their joint presentation on the "Past, Present, Future:

Water Quality Practices" at the Modern Maturity Center on September 15. Second in the series will feature **Jim Collins**, Vice President and General Manager of DuPont Crop Protection. He will present "**Future of Crop Protection: Is the Glass Half Full or Half Empty?**" on **October 20** at the Modern Maturity Center in Dover. Mark your calendars for **November 17** as **Ed Kee**, Ag Program Leader, University of Delaware Cooperative Extension, will present "**Saving Our Harvest, The Story of the Mid-Atlantic Canning and Freezing Industry**".

For more information regarding the Friends of Agriculture Breakfast Series you may visit <http://ag.udel.edu/agfriends> or call Alice Moore at 302-831-2504.



New Hires in UD Cooperative Extension

Rhonda Martell has accepted the position of Extension Educator of Substance Abuse Prevention for UD Cooperative Extension. Rhonda isn't new to UD Cooperative Extension. During the past six years she has served as Program Director and Site Coordinator of the 21st Century Grant Woodbridge 4-H/YMCA After-School and Summer Camp Programs. Rhonda has done a terrific job in carrying out the duties associated with these positions ... so much so her transition to this new exciting position is a real plus for all involved in Extension's 4-H Youth Development Program.

Nancy Fisher Gregory has accepted the position of Extension Associate II. In this role, she will continue her work as a Plant Disease Diagnostician with Bob Mulrooney. Many of you know and have worked with Nancy and thus are well aware of her extraordinary skills and tremendous work ethic. Needless to say, she is a great asset to our organization.

Carrie Murphy has accepted the Ornamental Horticulture Extension Agent III position in New Castle County. Carrie holds a B.S. in philosophy from Towson University and completed her M.S. in Plant and Soil Sciences and the Higher Education Teaching Certification Program at the University of Delaware. Prior to coming to UD, Carrie spent more than five years in horticulture-related work and study. Completing an internship at Longwood Gardens in the Greenhouse Production division and two years in the Professional Gardener Training Program also at Longwood. She has also conducted micro-green research at ARC Greenhouses in Shiloh, NJ. Please welcome Carrie to UD Extension.



In The News

National 4-H Week was celebrated in many special ways throughout Delaware this year. Each county provided opportunities to promote 4-H to our communities, family and friends through window displays, banners, litter barrels, posters and a variety of programs.



Congratulations to Maria Pippidis!



The National Extension Association of Family and Consumer Sciences (NEAFCS) selected Maria as the National Eastern Region Distinguished Service Award Winner in the areas of professional development, communications, program development and public relations. Official presentation of the award was made at the 2006 NEAFCS Annual Session & Exhibits, October 3-6 in Denver.

Congratulations to Ed Kee! The Sussex County Farm Bureau presented Ed with the "Distinguished Service to Agriculture Award" on October 7.

Gary Van Wicklen, Extension Poultry Engineer wrote an article appearing Sept. 12 in The Mid-Atlantic Poultry Farmer entitled "It's Time to Tighten your Poultry Houses."

Wendy Killmon, University of Delaware freshmen, is one of the 2006 Agriculture Scholarship recipients, as featured in the August 29 Delmarva Farmer.

Robin Morgan describes to the DPI Grower committee the work underway to identify all chicken genes in the article "Grower Committee Activities" and an article by **Gary Van Wicklen** "University of Delaware Offers Free Poultry House Evaluation Service" in the September, Timely Topics DPI Newsletter.

"Poultry Experts Conduct Delmarva Preparedness Briefing" **Dean Robin Morgan**, hosts the briefing. Article in the Mid-Atlantic Country Folks Farm Chronicle, October 2.





Looking Ahead



Future Blue Hens College Planning Programs

Ever wonder what it takes to get into college?

What should you be doing in high school to get ready?

Find out the answers to these and other questions at *The 2006 Future Blue Hens College Planning Programs*, specially designed for 4-H'ers in grades 7-12 and their families.

Join your county 4-H offices, Cooperative Extension and the University of Delaware College of Agriculture and Natural Resources for our November program, designed for 4-H'ers and their families. Topics will include UD admissions, scholarships and financial aid; the Associate in Arts program; and opportunities in the College of Agriculture and Natural Resources. All of this is designed to help you best prepare for college.

The event will be held on November 1 in Georgetown at the Carvel Center, at 7:00 p.m. To receive registration materials or to make a reservation, please call 302-831-2508 or send email to kra@udel.edu as soon as possible. Reservations are required.

Delaware Leaders



2006 Delaware 4-H Leader Forum will be Saturday, November 4 at Lake Forest High School, Felton from 8:30 a.m. to 3:30 p.m. Sixteen workshops for DSLF have been approved by the Office of Child Care Licensing for credit and attendees will receive certificates. A special thanks goes to Rhonda Martell and Michele Walfred for their time and effort in submitting the applications to DE OCCL for approval. For more information and registration form visit: <http://ag.udel.edu/extension/4h/index.php>



Horse Owner's Equine Forage Nutrition and Dental Care Conference will be Saturday, November 4 at Townsend Hall Commons from 9:00 a.m. to 3:00 p.m. For more information and registration form visit <http://ag.udel.edu/extension/>

Fall Events – For a variety of fall events throughout the state visit <http://ag.udel.edu/extension> to view the events calendar. You'll find activities for the whole family to enjoy!





Attention UD football Fans and 4-H Families!

A special day has been designated for you! "4-H Youth Day" will be held on Saturday, November 11. Activities will begin at 11 a.m. at the 4-H Fun Tent behind the UD Field House.

There will be many activities such as a petting zoo, face painting, crafts, food and prizes! At 1 p.m. the UD Blue Hens vs. William & Mary game begins! GO HENS! \$6 includes end-zone tickets, food and all 4-H Fun Day attractions. Wear your blue and gold and 4-H **green!!!!**

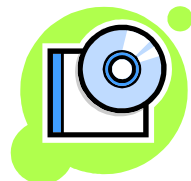


Limited space for a GPS/GIS workshop at nearby Townsend Hall beginning at 9:30 a.m. is available. Please let the 4-H office know if you are interested.

On the Cutting Edge

Bringing Biotechnology to YOU

A new instructional CD entitled, "Issues in Agricultural



Biotechnology: How to Make a Transgenic Plant" is available at no charge. This CD, developed by several UD faculty through a Higher Education Challenge Grant from the USDA, is useful for those interested in more fully understanding generalities of biotechnology as well as how transgenic plants are produced. It

includes a nine-minute animation that demonstrates the process of developing a transgenic plant and the viewpoints of five scientists with biotechnology expertise in food safety, plant science, animal science, and ethics. To order a CD, please email Elaine Eiker at ee@udel.edu. The module can also be accessed at <http://ag.udel.edu/agbiotech/>.

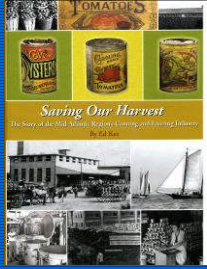


"Using Music Parodies in Food Safety Education"

- Carl K. Winter, University of California-Davis; Angela M. Fraser, North Carolina State University; Sandra McCurdy, University of Idaho; Susan K. Hovey, Clemson University; Elizabeth Hoyle, Clemson

University; **Sue Snider, University of Delaware**, Jeanne Gleason, New Mexico State University. Presented at 2006 Food Safety Education Conference, Reaching At-Risk Audiences and Today's Other Food Safety Challenges, Denver, CO, September 27 - 29.





“Saving Our Harvest, The Story of the Mid-Atlantic Canning and Freezing Industry” Ed Kee will be making the following scheduled presentations:

- Sept. 14 Museum of Industry, Baltimore
- Sept. 20 Rockawalkin Kiwanis Club, Salisbury, MD
- Sept. 30 Friends of the Rehoboth Library
- Oct. 7 MD Coin Collectors Assn. Tokens Division
- Oct. 18 DE Farmland Preservation Ceremony, Dover
- Nov. 4 DE Book Festival, DE Authors Tent, The Green at the State Capital, Dover
- Nov. 17 Friends of Agriculture Breakfast, Dover
- Nov. 19 Sherwood Women’s Club

“Sussex 4-Hers Question Families on Habits” article in The Delmarva Farmer, September 26, features the 11 students involved in the Delaware 4-H community mapping project discovering the influence of food marketing on children’s eating habits. A collaborative effort of DE 4-H, the Institute of Medicine and the Academy for Educational Development.

Grants

REAL 4-H! Environmental Community Grant made possible by Coca-Cola has funded \$7,500 to New Castle County 4-H! The successful application showed innovative and creative environmental science, incorporating the essential elements of 4-H, reached the required number of youth and partnering with local organizations in making a difference in the community with their Recycling Program.



NATIVE DELAWARE



Native Delaware is a weekly column in the Sunday News Journal that highlights University of Delaware Cooperative Extension Professionals' expertise on the plants, animals and land of the First State.

For more information regarding these articles please contact Susan Baldwin at 831-1355, smb@udel.edu or Margo McDonough at 831-1358, margomcd@udel.edu.

Director’s Journal

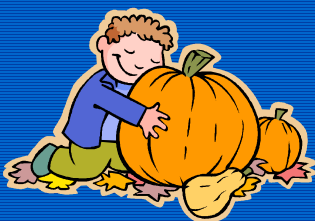
September 8 – Luncheon Meeting with UD & DSU FCS Staff

September 12 – Deans and Chairs Group Meeting

September 13 – Delmarva Poultry Industry Conference, Ocean City, MD

September 14 – Avian Influenza Briefing, Carvel REC, Georgetown

September 15 – Friends of Agriculture Breakfast, Dover; New Castle County Master Gardener Position Seminars and Interviews





- September 16 – Freshman Family Weekend Dessert with the Deans
- September 18 – New Castle County Master Gardener Position Seminars and Interviews
- September 19 – Administration Briefing
- September 20 – Ag Team Meeting; New Castle County Master Gardener Seminars and Interviews
- September 22 – Leadership Trust Meeting, Paradee Center, Dover
- September 25 – New Castle County Master Gardener Position Seminars and Interviews
- September 26 – CANR Program Townsend Hall, ECOP Task Force Conference Call
- September 27 – Delaware Cooperative Extension Annual Conference Planning Committee Meeting, Paradee Center, Dover
- September 28 – DEFAC Meeting, Dover; DSU FCS Seminar; Conflict of Interest Workshop, Trabant Center
- September 29 – Clayton, DE BioDiesel Plant Ribbon Cutting Ceremony
- September 30 – Sussex County 4-H Achievement Award Reception
- October 1 – Coast Day, Lewes
- October 2 – Sea Grant Review, testimony before review panel
- October 3 – Deans/Chairs Group Meeting
- October 5 – Ratledge Awards Ceremony and Dinner for Bud Malone
- October 10 – Center for Critical Zone Research press conference and sessions Dr. Bruhn, UC Davis, Guest speaker
- October 11 – DISC annual meeting, Georgetown; FCE State Day, Newark; OVPR Intellectual Property Staff and Outside Counsel event
- October 12 – Lights on Afterschool Celebration Eastside Charter School
- October 13 – Delaware Diamonds, Legacy, Pillar and Signer Societies reception The Gardens at the Center for the Arts
- October 14 – Homecoming Celebrations, Newark Campus
- October 16 – Administrative Briefing
- October 17 – Kent County Master Gardener Presentation; NCC 4-H Achievement Award Banquet
- October 18 – Master Gardener Banquet
- October 19 – Delaware Cooperative Extension Annual Conference
- October 20 – Friends of Agriculture Breakfast Series, Dover; Dedication Ceremony for the Center for the Arts, Newark Campus
- October 21 – Dedication Celebration for the Center for the Arts, Newark
- October 22 – Dedication Celebration for the Center for the Arts; Kent County 4-H Achievement Awards Banquet
- October 23-26 – NAE4-HA Conference, Milwaukee WI

