

In This Issue

- In The News
- Native Delaware Column
- Retirements & Promotions
- Looking Ahead
- Director's Journal
- On the Cutting Edge
- Grants

Cooperative Extension

Cooperative Extension Home

New Castle County Extension

Kent County Extension

Sussex County Extension

Delaware 4-H

Related Links

Friends of Agriculture

Horizons

Delaware State Fair

"A Day on the Farm - 2006"



Woodside Farm Creamery, Hockessin, DE

Saturday June 3, 2006 was the 7th Annual "Day on the Farm" From 10:00 a.m. to 4:00 p.m. "Guiding Paws" dog show, backyard composters for sale, spinners, weavers, hay rides, woodland walks, straw bale maze, livestock, live honey bee colony, food, fun, clothing and more. More than 4,000 attended this event in spite of the inclement weather. Many thanks to **Carl Davis** and his team for the success of this event.

Delaware 4-H Legislative Day

May 31, 2006

Some 100 Delaware 4-H members met legislators and made presentations from the floor of the House & Senate.



Avian Biosciences Center

On Friday June 9, 2006 was the opening of the Avian Biosciences Center at the Elbert N. and Ann V. Carvel Research and Education Center in Georgetown. This Center will be the formal organization of the University of Delaware's existing strong program in poultry health and nutrient management and expansion of these programs to include additional efforts aimed at enhancing profitability of the poultry and allied industries. A mini-symposium was held that focused on Delmarva's Avian Influenza Coordinated Effort.

The topics and presenters:

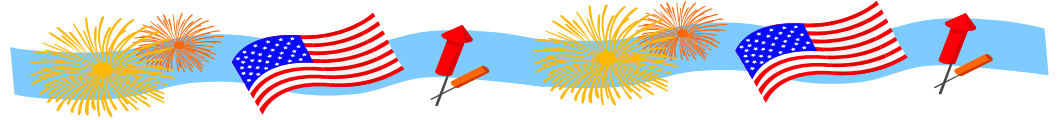
"H5N1 Avian Influenza, History and Current Status" Beth Krushinskie (ACDI/VOCA and USAID Avian Influenza Core Team); "Wild Bird Surveillance in the US" Richard Slemons (Ohio State University); "Poultry Surveillance in the US" Jack Gelb (University of Delaware);

Questions and Discussion:

"Delmarva Coordinated Response Planning" Don Ritter (Mountaire Farms of Delaware); "On- Farm Responses" Bud Malone (University of Delaware); "Human-Animal (wild bird and poultry) Interface" Paul Silverman (Delaware Department of Health and Social Services).

In The News

Eliot Sun New Castle County 4-H Day Camp Counselor has been selected as one of the 2006 Presidential Scholar Awards. He is among the 141 high school seniors nationwide to earn this honor. Eliot and his family will spend 4 days in Washington DC for the National Recognition events, and will have a chance to go to Capital Hill to meet the President!



Bob Mulrooney is the proud grandfather of twin girls Olivia and Caitlin Ruth Mulrooney born May 31, 2006 to Clare and Steve Mulrooney.



Congratulations to **Katie Daly** Extension Educator, 4-H Youth Development and **Brian Tinsman** Sussex County 4-H who have been asked to serve on the 2007 National 4-H Conference Planning Committee. This is the second year in a row Katie has served on this committee...very few people are invited to participate two years in a row.



Jennifer Crouse Kent County 4-H was named class valedictorian when she graduated from Lake Forest High School on June 2, 2006.

May 17 & 18 Farm Tours - Perfect weather for 1,729 visitors to the Hopkins farm in Sussex County. Exhibits, animals, Hopkins farm team, volunteers and educators shared the agriculture story! Thanks to all for helping make this popular event so successful. The farm tour was featured in a nice color article in the Cape Gazette.

In the latest Messenger **Jan Seitz** was one of a number of campus administrators and professionals to suggest books for summer reading. Jan recommended *Good to Great: why Some Companies Make the Leap and Others Don't* by Jim Collins, a best seller on leadership and *Positively Outrageous Service: How to Delight and Astound Your Customers and Win Them for Life* by T. Scott Gross.

Gary Van Wicklen was the author of an article in The Mid-Atlantic Poultry Farmer titled "University of Delaware offers free house evaluation service" promoting the services Delaware Cooperative Extension offers to Delmarva poultry growers.

The National Extension Association of Family and Consumer Sciences (NEAFCS) have selected **Maria R. Pippidis** as the National Winner and Eastern Region in the Distinguished Service Award in the areas of professional development, communications, program development and public relations. Official presentation of the award will be made at the 2006 NEAFCS Annual Session & Exhibits, October 3-6, 2006 in Denver.

[Top](#)



Kathryne Everts, Extension Plant Pathologist, was quoted in The Daily Times (Salisbury, MD) article "Farmers try to stay one step ahead of crop diseases" on June 18th and the quote about diseases that effect vegetables was picked up as a state brief for USA Today on June 19th.



Retirements and Promotions

Cooperative Expressions is pleased to pay tribute to the retirements of Roxane Whittaker, Ron Jester, and Ted Palmer. Also to Jo Mercer who has recently taken a position at the National Arboretum in Washington DC.

Congratulations to those among us who have been promoted: Bob Mulrooney to Specialist IV; Shawn Tingle to Extension Associate II; Sydney Young Riggi to Extension Associate III; and Mike Love to Extension Agent II.

[Top](#)

Looking Ahead



4-H Summer Camps



Applications are being accepted on a space available basis. There are county day camps and the 4-H state camp. For more information: <http://ag.udel.edu/extension/4h/index.php>

The Delaware State Fair July 21-29

www.delawarestatefair.com

4-H Building Hosts/Hostesses are needed



Delaware State Grange and Farm Bureau

These two organizations are very supportive of the 4-H program. Both groups, especially the Grange are in need of 4-H members and volunteers to help them in their food booths during the fair. The Grange needs help from 8am to 11am shucking corns and preparing potatoes. Then they need help on the food serving lines from 11am to 2pm and 4:30 pm to 7:30 pm. The Grange makes donations back to local 4-H clubs for every hour a 4-H'er worked this past year. They will do this again this coming fair. The Farm Bureau needs help serving food 11 am to 2 pm and 4:30 pm to 7:30 pm. The Grange also has work opportunities for younger 4-H members.

[Top](#)





On the Cutting Edge

Please welcome **Dr. Brian Kunkel** Extension Specialist IPM & Ornamental in the College of Agriculture & Natural Resources, Department of Entomology and Wildlife Ecology to the Delaware Cooperative Extension team.



....As to how one person can make a difference? After several years of collecting newspapers, magazines and junk mail and taking them to the local recycling centers; **Dot Abbott** has arranged with Delaware Solid Waste Authority to have a free curbside recycling pick-up schedule for the Paradee Center. Look for the specially marked blue recycling bins and help Dot continue the efforts in making a difference in our community by recycling.

Grants

The Office of Highway Safety has obligated FY 2007 funds to the New Castle County Community Traffic Safety Program in the amount of \$100,534.00, this will be submitted to the National Highway Traffic Safety Administration in August 2006. Upon congressional authorization the funds will be obligated for the project October 1, 2006 through September 30, 2007. Congratulations to **Cindy Genau** thanks for your commitment to highway safety.

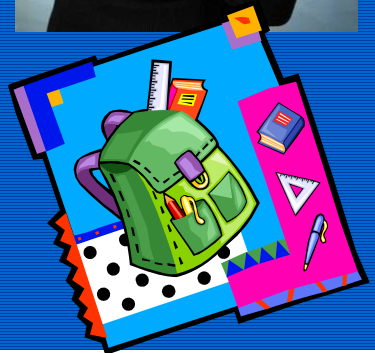


Miss Sussex County 2006

With your help, Miss Sussex County 2006, **Kayla Martell** is hoping to bring a smile to the faces of students and their parents as 4-H'ers help relieve some of the burden placed on parents by collecting "**Tools for Schools**" so that youth from homeless and low income families will have the necessary school supplies so that when they attend school in the fall, they can start out on the right foot. For information on how you can help, call Miss Sussex County 2006, Kayla Martell at 302-422-0341 or email her at misssussexcounty2006@yahoo.com All school supplies are needed including markers, construction paper, scissors, composition books, dictionaries, notebooks, dividers, pencil bag/box, 2 pocket 3 pronged folders, tissues, liquid soap, hand sanitizer. Please turn in all the supplies to your county 4-H office. Supplies collected will be distributed in the county they were collected.



Kayla is 4-H in action, Miss Sussex County 2006 and 4th runner up in the recent Miss Delaware pageant, her project "Tools for Schools" is a "4-H'er helping other 4-H'ers" with recipients being 4-H members in the 4-H After School Programs. Congratulations Kayla in making a difference in the lives of Delaware children "one child at a time."





NATIVE DELAWARE

Native Delaware is a weekly column in the Sunday News Journal that highlights University of Delaware Cooperative Extension Professionals' expertise on the plants, animals and weather of the First State.

For more information regarding these articles please contact Susan Baldwin at 831-1355 smb@udel.edu or Margo McDonough at 831-1358 margomcd@udel.edu.

Director's Journal

- June 1 – Extension Scholars Luncheon, Blue & Gold Club
- June 2 – Longwood Garden Party
- June 3 – A Day on the Farm
- June 5 – The Paul R. Jones Collection Initiative annual reception & dinner.
- June 6 – Met with Julia Wheeler DuPont Director of Development
- June 7 – Specialists Interviews
- June 9 – Avian Biosciences Center Dedication and symposium
- June 9 & 10 - Miss Delaware Pageant
- June 10 – Reception for Jennifer Crouse
- June 13 – Specialists Interviews
- June 14 – Retirement reception for Connie Webber
- June 22 – Retirement reception in Sussex County
- June 27 – ECOP 4-H Task Force conference call
- June 29 – Public Allies reception; CYFAR grant on-site review; National 4-H Council conference call



[Top](#)