

Figure 54. Dorsal habitus of Fulgoridae (scale = 2.0 mm). A. *Alphina glauca*, B. *Amycle tumacacoriae*, C. *Cyrptus belfragei*, D. *C. vanduzeei*, E. *Poblicia fuliginosa*, F. *Rhabdocephala brunnea*.

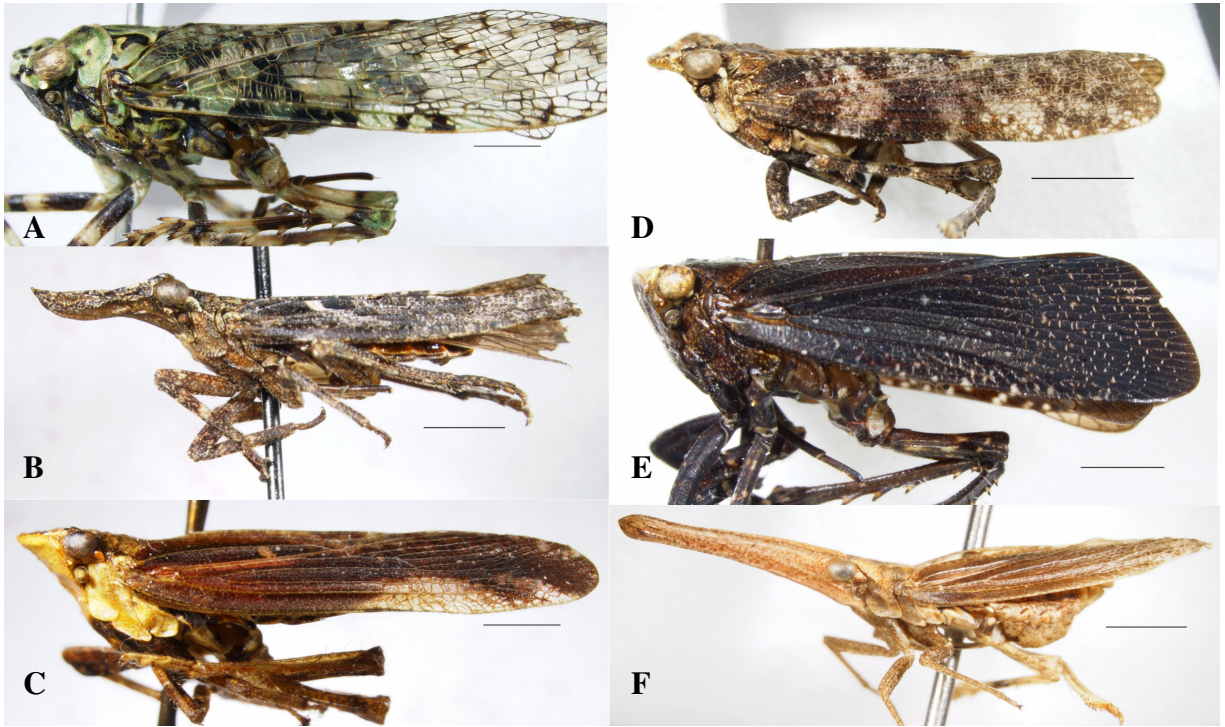


Figure 55. Lateral views of Fulgoridae (scale = 2.0 mm). A. *Alphina glauca*, B. *Amycle tumacacoriae*, C. *Cyrpoptus belfragei*, D. *C. vanduzeei*, E. *Poblicia fuliginosa*, F. *Rhabdocephala brunnea*.