

Figure 11. Dorsal habitus of Cixiidae (scale = 0.5 mm). A. *Bothriocera cognita*, B. *Cixius pini*, C. *Haplaxius radicus*, D. *Melanoliarus placitus* E. *Microledra olor*, F. *Nymphoxicia unipunctata*, G. *Oecleus* sp., H. *Pintalia vibex*.

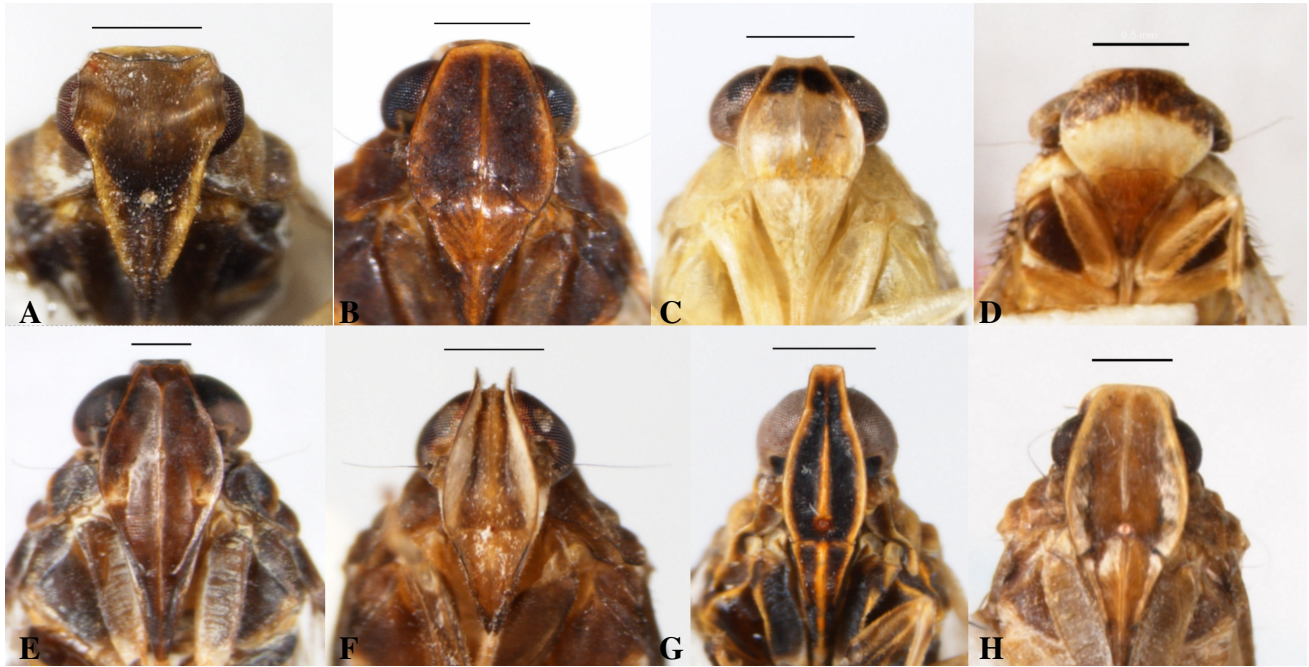


Figure 12. Frons of Cixiidae (scale = 0.5 mm). A. *Bothriocera cognita*, B. *Cixius pini*. C. *Haplaxius radicus*, D. *Melanoliarus placitus* E. *Microledra olor*, F. *Nymphoxicia unipunctata*, G. *Oecleus* sp.. H. *Pintalia vibex*.

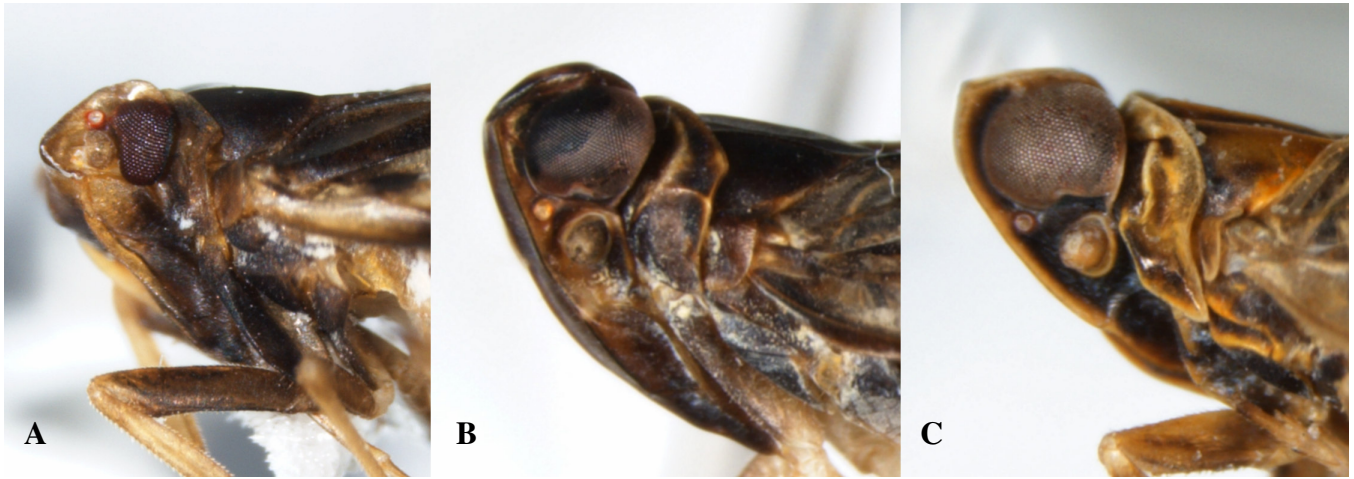


Figure 13. Lateral view of heads of Cixiidae. A. *Bothriocera cognita*, B. *Melanoliarius placitus*, C. *Oecleus* sp.