

Figure 1. Dorsal habitus of Acanaloniidae (scale = 0.5 mm). A. *Acanalonia clypeata*, B. *A. conica*, C. *A. fasciata*, D. *Euthiscia tuberculata*.

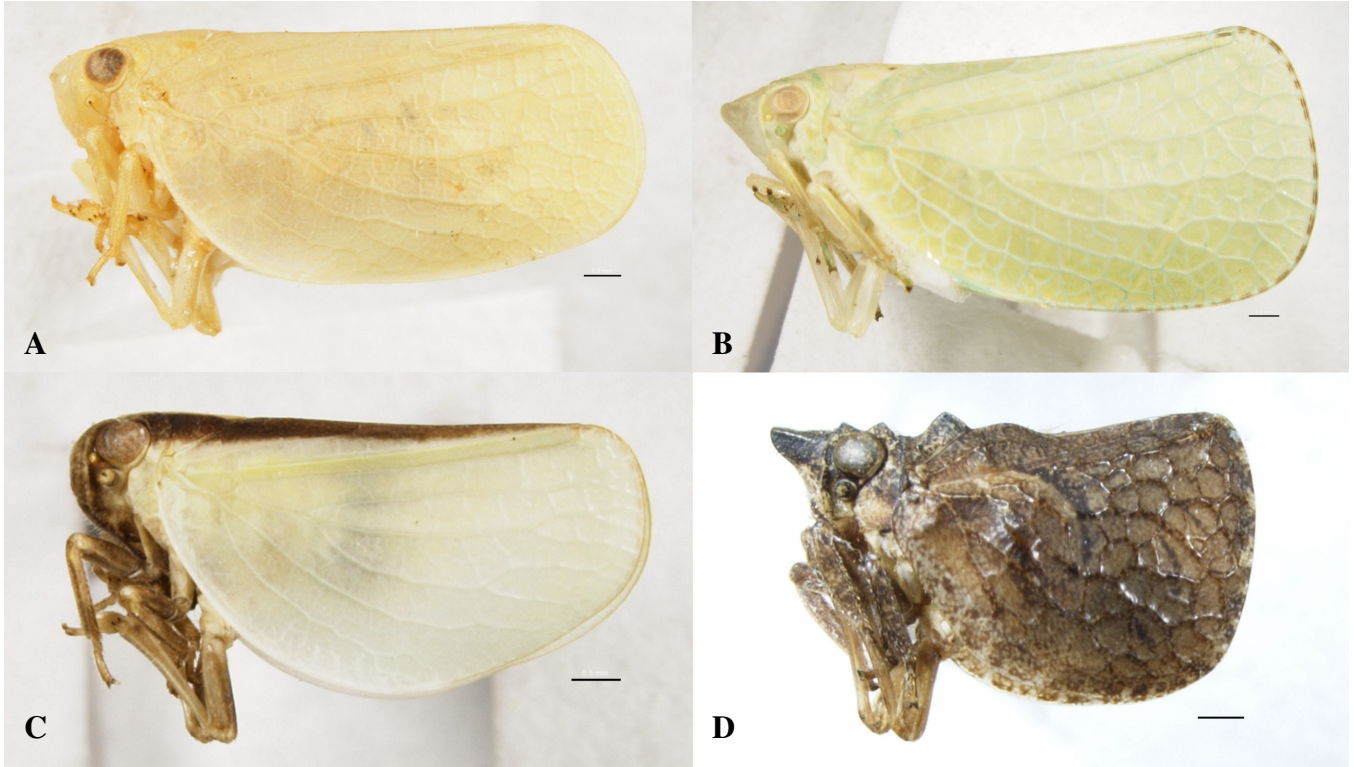


Figure 2. Lateral views of Acanaloniidae (scale = 0.5 mm). A. *Acanalonia clypeata*, B. *A. conica*, C. *A. fasciata*, D. *Euthiscia tuberculata*.

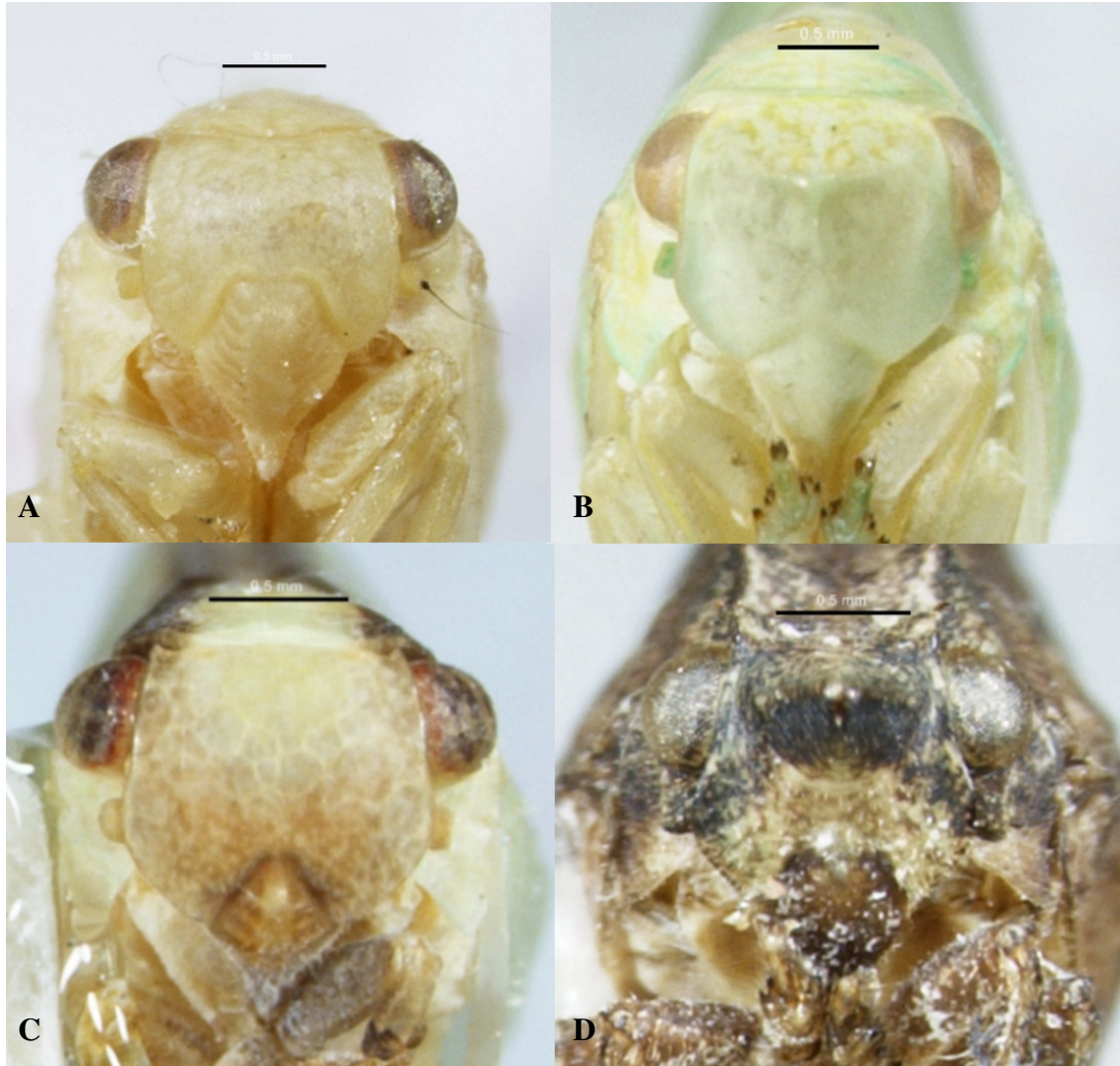


Figure 3. Frons of Acanaloniidae (scale = 0.5 mm). A. *Acanalonia clypeata*, B. *A. conica*, C. *A. fasciata*, D *Euthiscia tuberculata*.