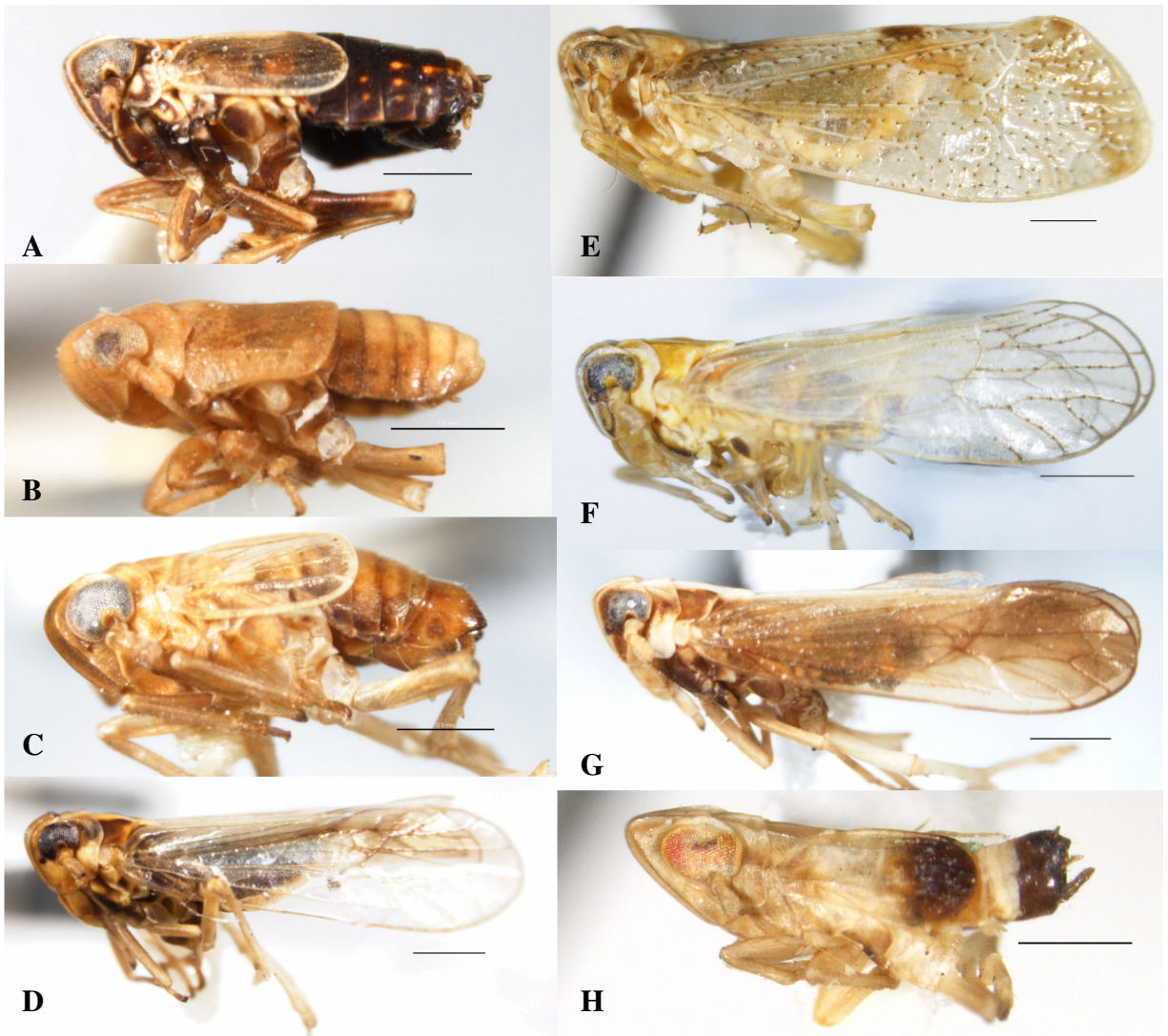
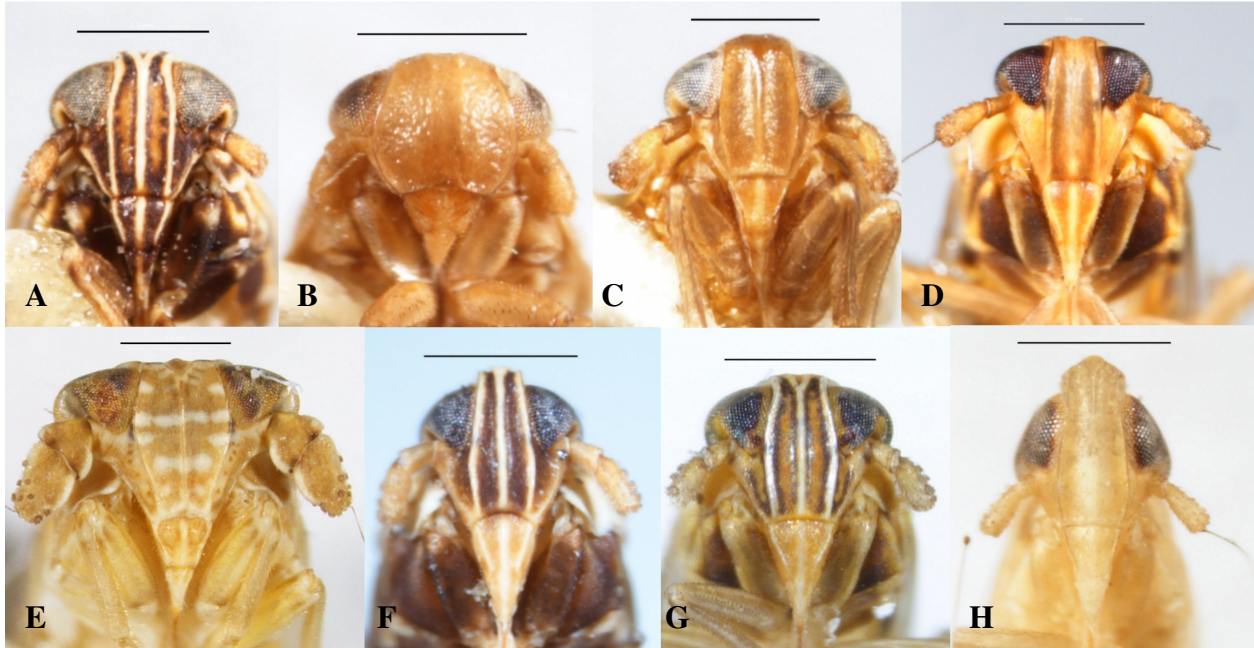


**Figure 35.** Dorsal habitus of Delphacidae, Delphacini VII (scale = 0.5 mm). A. *Ribautodelphax albostriata*, B. *Rotundifronta lutea*, C. *Scolopygos pallida*, D. *Sogatella kolophon*, E. *Stobaera pallida*, F. *Tagosodes orizicolus*, G. *Toya propinqua*, H. *Tumidagena minutua*.



**Figure 36.** Lateral views of Delphacidae, Delphacini VII (scale = 0.5 mm). A. *Ribautodelphax albostriata*, B. *Rotundifronta lutea*, C. *Scolopygos pallida*, D. *Sogatella kolophon*, E. *Stobaera pallida*, F. *Tagosodes orizicolus*, G. *Toya propinqua*, H. *Tumidagenia minutua*.



**Figure 37.** Frons of Delphacidae, Delphacini VII (scale = 0.5 mm). A. *Ribautodelphax albostriata*, B. *Rotundifronta lutea*, C. *Scolopygos pallida*, D. *Sogatella kolophon*, E. *Stobaera pallida*, F. *Tagosodes orizicolus*, G. *Toya propinqua*, H. *Tumidagena minutua*.