

***Persicaria perfoliata* (L.) H. Gross -- Mile-a-minute-vine**

Ray S Williams, Derick Poindexter, Matthew Swain  
Williams: willmsrs@appstate.edu

Poindexter, D.B. 2010. *Persicaria perfoliata* (Polygonaceae) reaches North Carolina. *Phytoneuron* 2010-30: 1-9.

**PERSICARIA PERFOLIATA (POLYGONACEAE) REACHES NORTH CAROLINA**

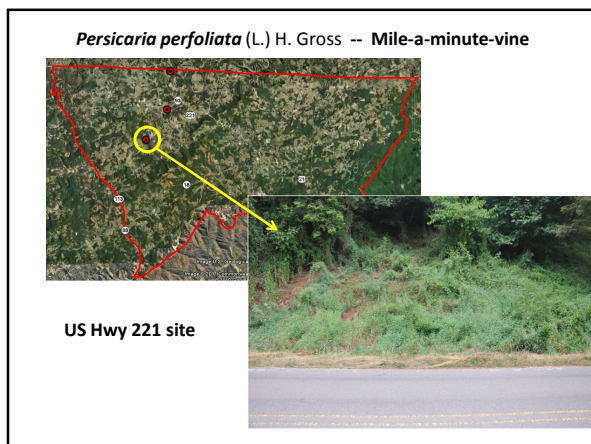
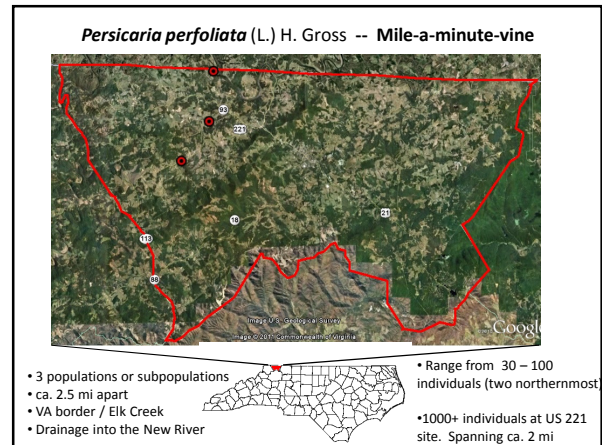
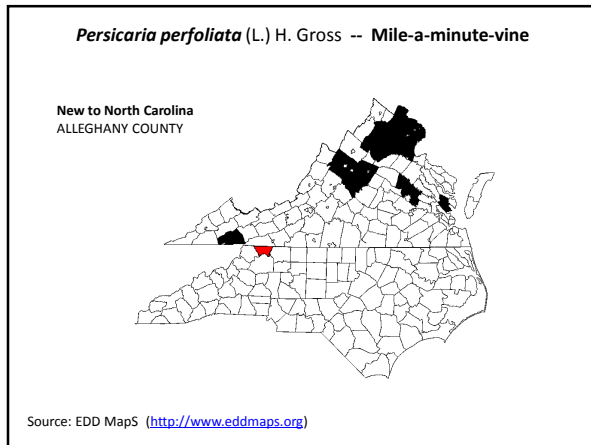
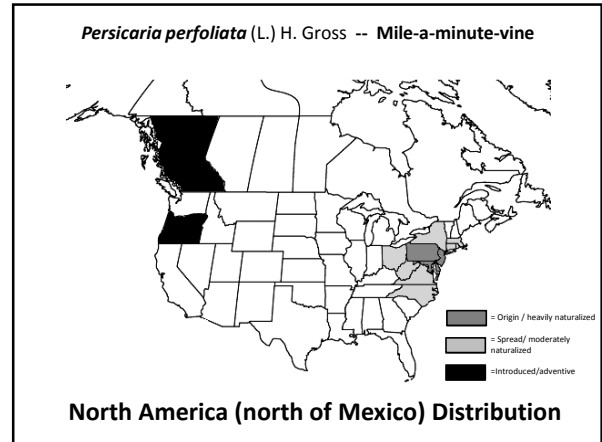
DERICK B. POINDEXTER  
J.W. Carpenter, Jr. Herbarium  
Department of Biology  
Appalachian State University  
Boone, NC 28608, USA

**ABSTRACT**  
*Persicaria perfoliata* is documented as established for the first time in North Carolina. This taxon is a state-listed Class A noxious weed that has very aggressive naturalizing tendencies. At least three distinct populations have been discovered in north central Allegheny County. Plants in all localities are fruiting rampantly and spreading to adjacent disturbed areas. A key is provided to help differentiate similar congeners in North America and color photos show features of the habitats and plants.

**KEY WORDS:** *Persicaria perfoliata*, Polygonum, Polygonaceae, Mile-a-minute, North Carolina

First detected on June 12, 2000, in Wake County, NC where two plants were found growing in pots containing Hostas (*Hosta* sp.) inside a contained greenhouse.

Not known from any naturalized populations till now.



### North Carolina Project Overview

**Collaborators:**

Judy Hough-Goldstein and Ellen Lake (U Delaware)

Richard Reardon (USDAFS)

Rick Iverson (NCDA & CS)

NC Department of Transportation

### Approaches

- Identification of *Persicaria* populations in Alleghany County, NC (2011)
- Introduction of *Rhinoncomimus latipes* (2011)
- Monitor the efficacy of the weevil (2011-2014)
- Characterize the vegetative community within and outside the infested area to examine changes to the community as *Persicaria* is controlled (2012-2013)
- Examine plant-insect phenology parameters for comparisons across geographical regions (2011-2014)
- Examine the efficacy of management strategy combinations within the context of *R. latipes* (2012-2014)