

The Delaware Nature Society, a nonprofit membership organization, fosters understanding, appreciation, and enjoyment of the natural world through education, preserves ecologically significant areas; and advocates stewardship of natural resources. Visit our webpage [www.dca.net/naturesociety](http://www.dca.net/naturesociety)

**PURPOSE**

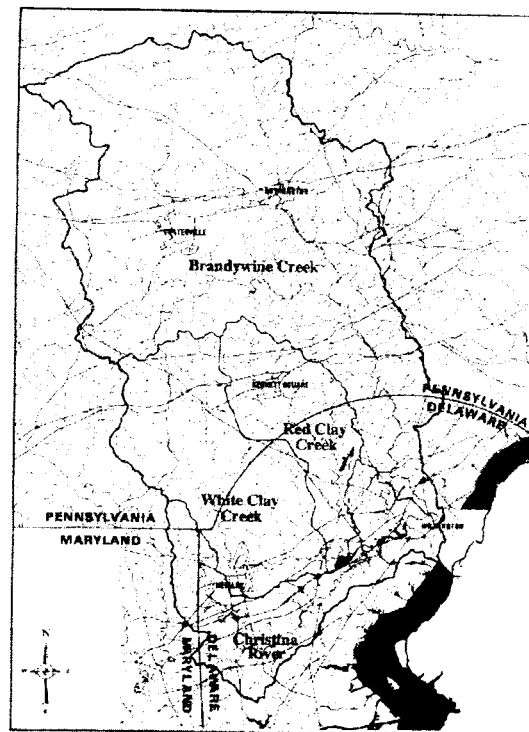
*This conference is designed to inform local officials, landowners, and other stakeholders about the impending Total Maximum Daily Load (TMDL) process and how it will impact point source dischargers (wastewater dischargers, industry) as well as non-point sources (industry, developers/home builders, agriculture, residents, local government). A TMDL is the maximum amount of a pollutant that can be put into a body of water without violating water quality standards. The TMDL process for point source dischargers is due to be completed by the year 2000; following that, the process for non-point sources will be completed.*

**REGISTRATION**

The Conference is **FREE**, but registration is required. Please return this form by **June 7, 1999**. If you have any questions, call (302) 239-2334, ext. 32. Mail to: Eileen Butler, Delaware Nature Society, P.O. Box 700, Hockessin, DE 19707.

Name: \_\_\_\_\_  
 Address: \_\_\_\_\_  
 \_\_\_\_\_  
 Organization: \_\_\_\_\_  
 Phone: \_\_\_\_\_

**Interstate Initiatives  
for Clean Water  
in the  
Christina Basin**



**Delaware Nature Society  
Ashland Nature Center  
June 17, 1999**

## AGENDA

- 8:00 a.m. **Registration**
- 8:45 a.m. **Welcome**  
*Linda Stapleford*, Associate Director for Natural Resources Conservation, Delaware Nature Society  
*Robert Struble*, Executive Director, Brandywine Valley/Red Clay Valley Associations
- 9:00 a.m. **Interstate Watershed Partnership**  
*David Pollison*, Planning and Implementation Branch Head, Delaware River Basin Commission, gives background information and early history of interstate water quality problems and issues in the Christina basin.
- 9:15 a.m. **The Christina Clean Water Strategy Progress Report**  
*Gerard Kauffman*, Water Resources Engineer, University of Delaware Water Resources Agency, and *Janet Bowers*, Executive Director, Chester County Water Resources Authority, present an overview of recent progress and recommendations for a Watershed Restoration Action Strategy.
- 9:45 a.m. **Break** (refreshments)
- 10:00 a.m. **TMDL Point Source Overview**  
*John Davis*, Consultant, Widener University, explains what a TMDL is and the model used for crafting a TMDL for point sources in the basin.
- 10:20 a.m. **Zinc TMDL**  
*Richard Greene*, Environmental Engineer, Water Assessment Section, DE Dept. of Natural Resources and Environmental Control, discusses the TMDL established for zinc in the Red Clay Creek.
- 10:45 a.m. **Response From Discharger Stakeholders**  
*Bart Ruiter*, Engineer, DuPont Company, *Jeffrey Holmes*, General Motors Corporation, *Herbert Mays*, Executive Director, Downingtown Area Regional Authority, and *James Jordan*, Environmental Manager, NVF Company, offer their responses as representatives of point source dischargers in the basin.
- 11:15 a.m. **TMDL Non-Point Source Overview**  
*Kent Crawford*, Water Quality Specialist, United States Geological Survey, presents the model which will be used to calculate the non-point source component of the TMDL.
- 11:30 a.m. **Lessons Learned From The Inland Bays Experience**  
*John Schneider*, Manager, Watershed Assessment Section, DE Dept. of Natural Resources and Environmental Control, shares his experiences of the TMDL process for the Inland Bays.
- 11:45 a.m. **Response From Non-Point Source Stakeholder**  
*Saurabh Srivastava*, Environmental Coordinator, New Castle County Dept. of Special Services, *James McCulley*, Consultant, Home Builders Association of Delaware, Inc., and *Jack Arrell*, Donald B. Neddham Co. and President, Chester County Assoc. of Twp. Officials, share their impressions of the impending TMDL process for non-point source dischargers in the basin.
- 12:15 p.m. **Lunch** (video available to view)
- 1:00 p.m. **Implementing The Overall Strategy**  
Learn about a variety of watershed restoration programs in which the public can participate to help achieve water quality standards.
- Robert Struble*, Executive Director, Brandywine Valley/Red Clay Valley Associations, discusses **Public Education and Outreach**.
- Daniel Greig*, Manager, Chester County Conservation District, explains the **Stormdrain Stenciling Program**.
- David Warner*, Volunteer, University of Delaware, Cooperative Extension, presents the **Master Gardener Program**.
- Eileen Butler*, Soil Watch Coordinator, Delaware Nature Society, gives an overview of the **Soil Watch Program**.
- 2:00 p.m. **Break** (refreshments)
- 2:15 p.m. **BMP Implementation Projects**  
Learn about projects that implement Best Management Practices in the basin.
- Daniel Greig*, Manager, Chester County Conservation District, explains the benefits of **Pennsylvania BMP Projects**.
- Jack Lakatos*, District Conservationist, New Castle Conservation District, presents the **Independence School Wetlands and Cool Run Wetlands Projects**.
- Richard LaPointe*, Director, Public Works, City of Newark, shares experiences from the **Newark Bioengineering Project**.
- The audience is invited to share information they may have on **Other Watershed Projects** underway in the basin.
- 3:15 p.m. **Ongoing Local/State Watershed Programs**  
*Janet Bowers*, Executive Director, Chester County Water Resources Authority, discusses groundwater and watershed restoration activities occurring at the County level in Pennsylvania through the **Chester County Water Resources Management Plan**.

*Stephen Williams*, Whole Basin Coordinator, DE Dept. of Natural Resources and Environmental Control, discusses activities happening in Delaware at the State level through the **Whole Basin Program**.

4:00 p.m. **Next Steps**

*David Pollison*, Planning and Implementation Branch Head, Delaware River Basin Commission, describes future activities involved in the Watershed Restoration Action Strategy for the Christina basin.

4:15 p.m. **Adjourn**

### ***SPONSORS***



- ◆ *Brandywine Valley/Red Clay Valley Associations*
- ◆ *Chester County Conservation District*
- ◆ *Chester County Water Resources Authority*
- ◆ *Delaware Department of Natural Resources and Environmental Control*
- ◆ *Delaware Nature Society*
- ◆ *Delaware River Basin Commission*
- ◆ *Environmental Protection Agency Reg. III*
- ◆ *New Castle Conservation District*
- ◆ *Pennsylvania Department of Environmental Protection*
- ◆ *United States Geological Survey*
- ◆ *University of Delaware Water Resources Agency*

Additional funding provided by Pennsylvania and Delaware Non-Point Source Section 319 programs.

The mission of the Christina Basin Water Quality Management Plan is to identify pollutants, develop a plan to reduce these pollutants and achieve and maintain water quality standards