

Neopunana saba n.sp.

Abb. 10: Distalende des rechten Hinterbeins

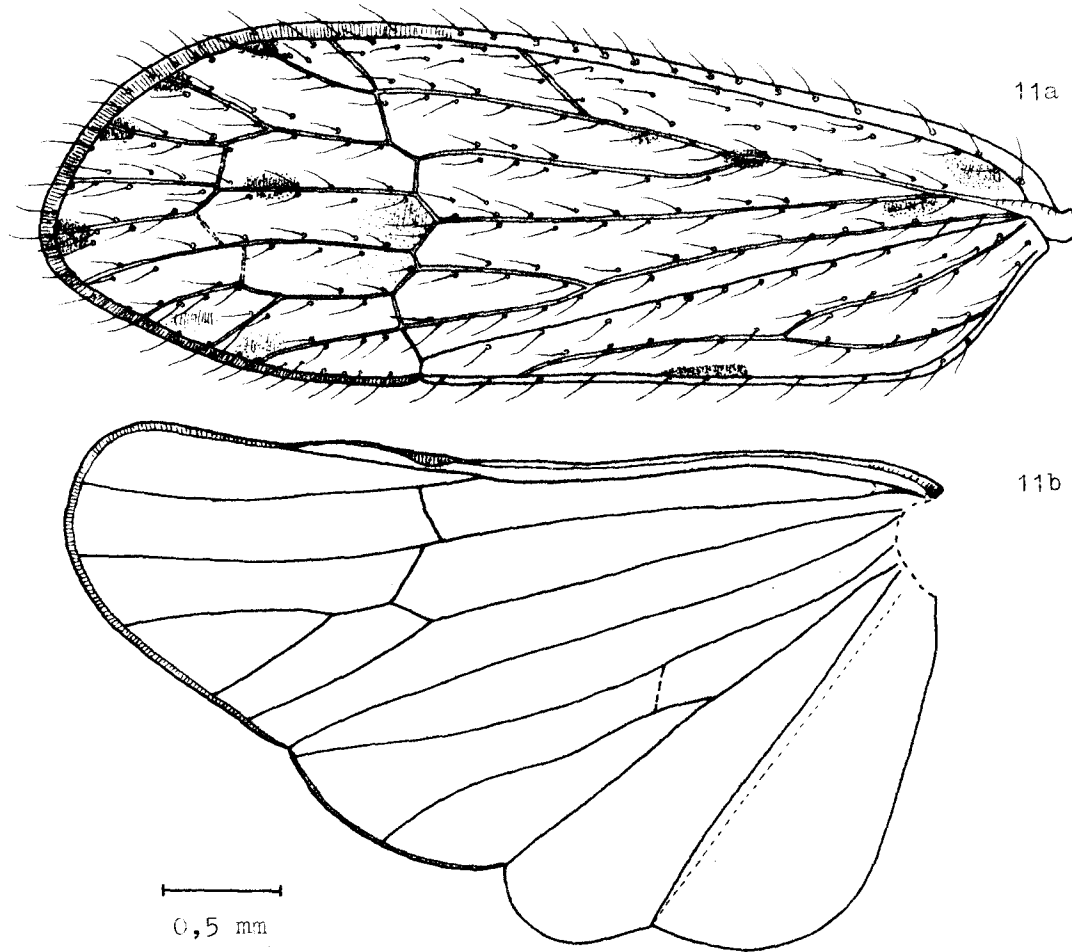
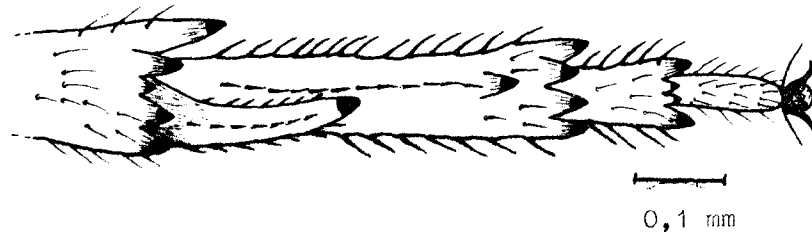


Abb. 11: Flugorgane

- a) linker Vorderflügel
- b) linker Hinterflügel

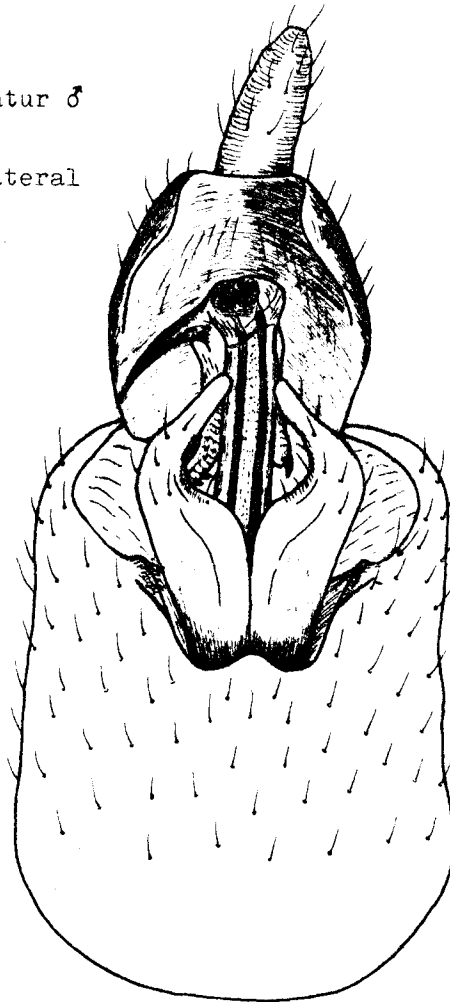
Neopunana saba n.sp.

Abb. 12: Genitalarmatur ♂

a) ventral

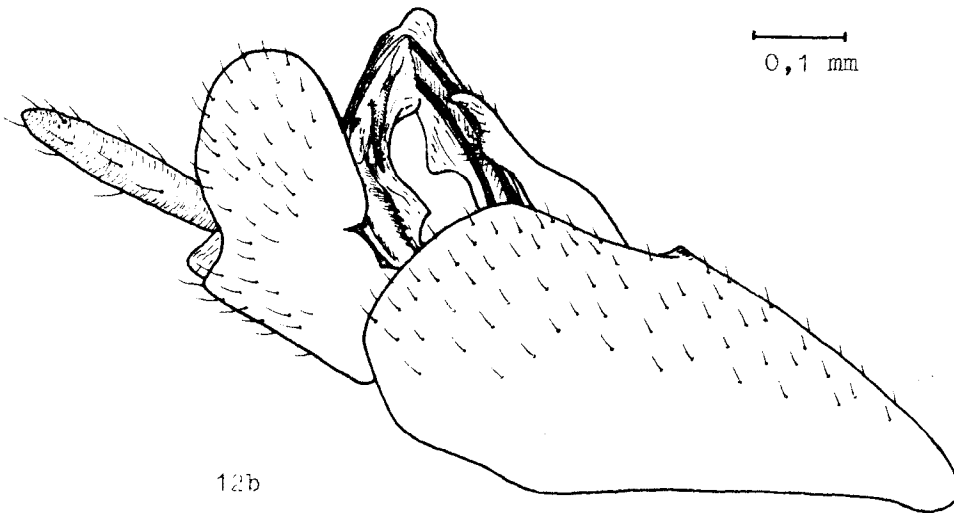
b) links lateral

12a



0,1 mm

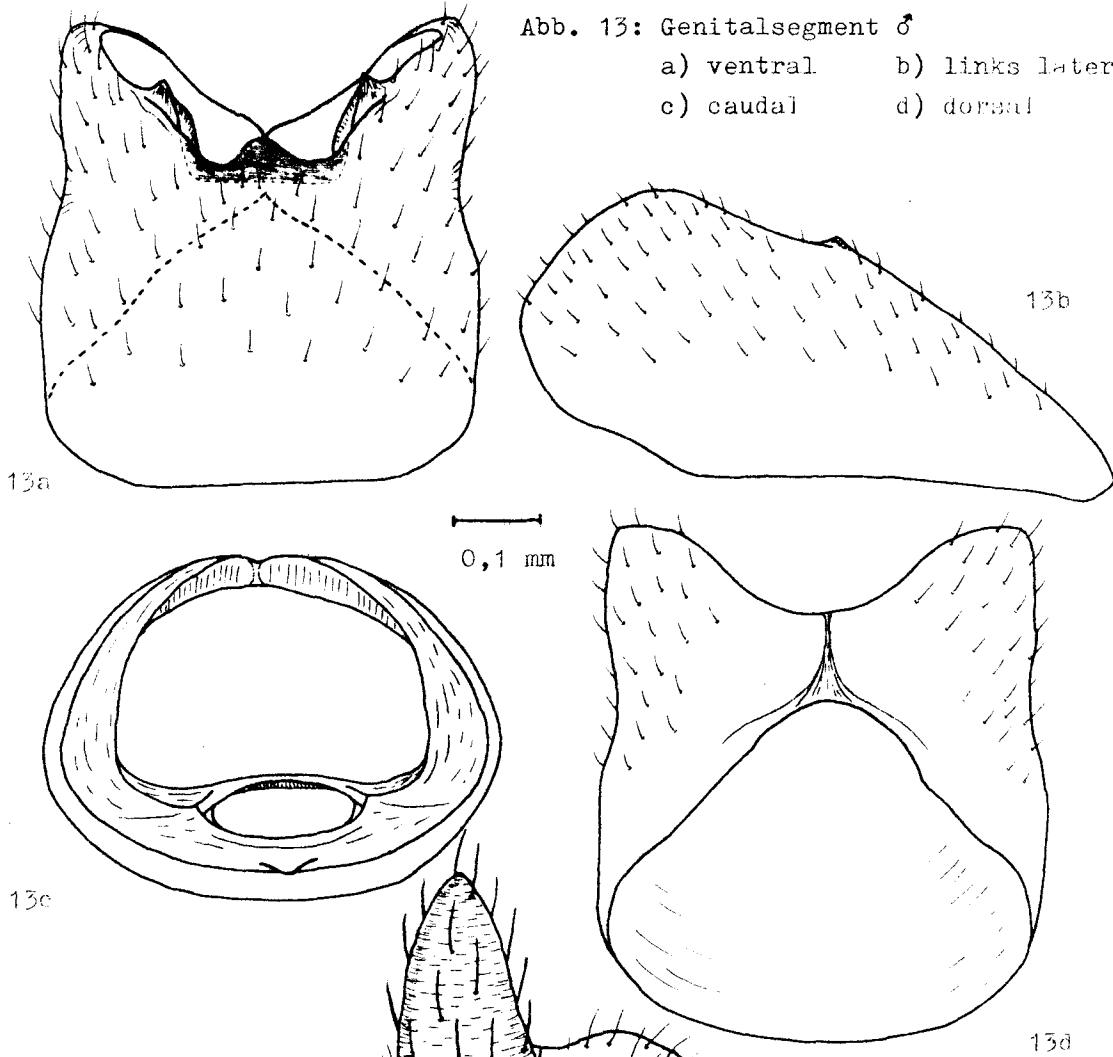
12b



Neopunana saba n.sp.

Abb. 13: Genitalsegment ♂

- a) ventral
- b) links lateral
- c) caudal
- d) dorsal



13a

13b

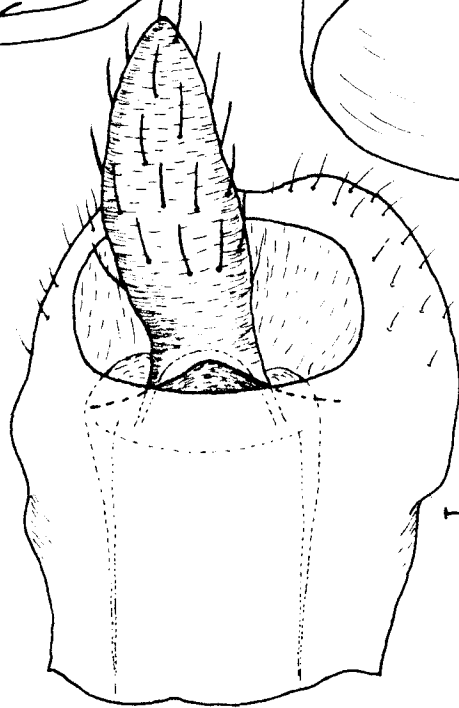
13c

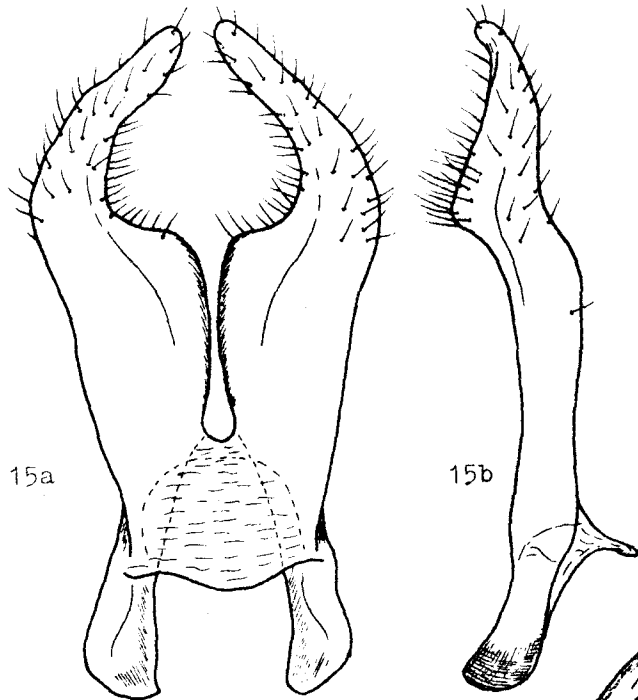
13d

0,1 mm

0,1 mm

Abb. 14:  
Analrohr, dorsal





Neopunana saba n.sp.

Abb. 15: Parameren

a) ventral

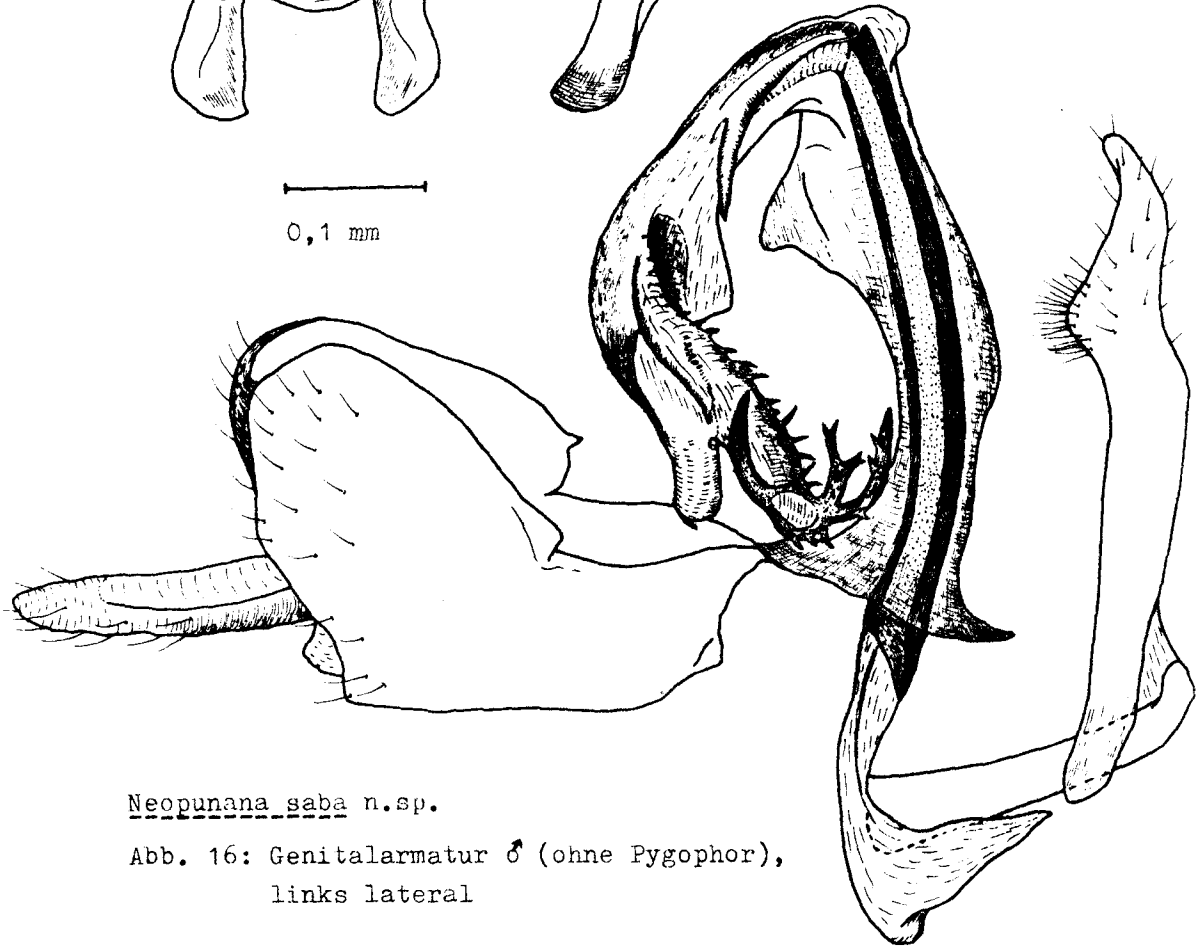
b) links lateral

15a

15b

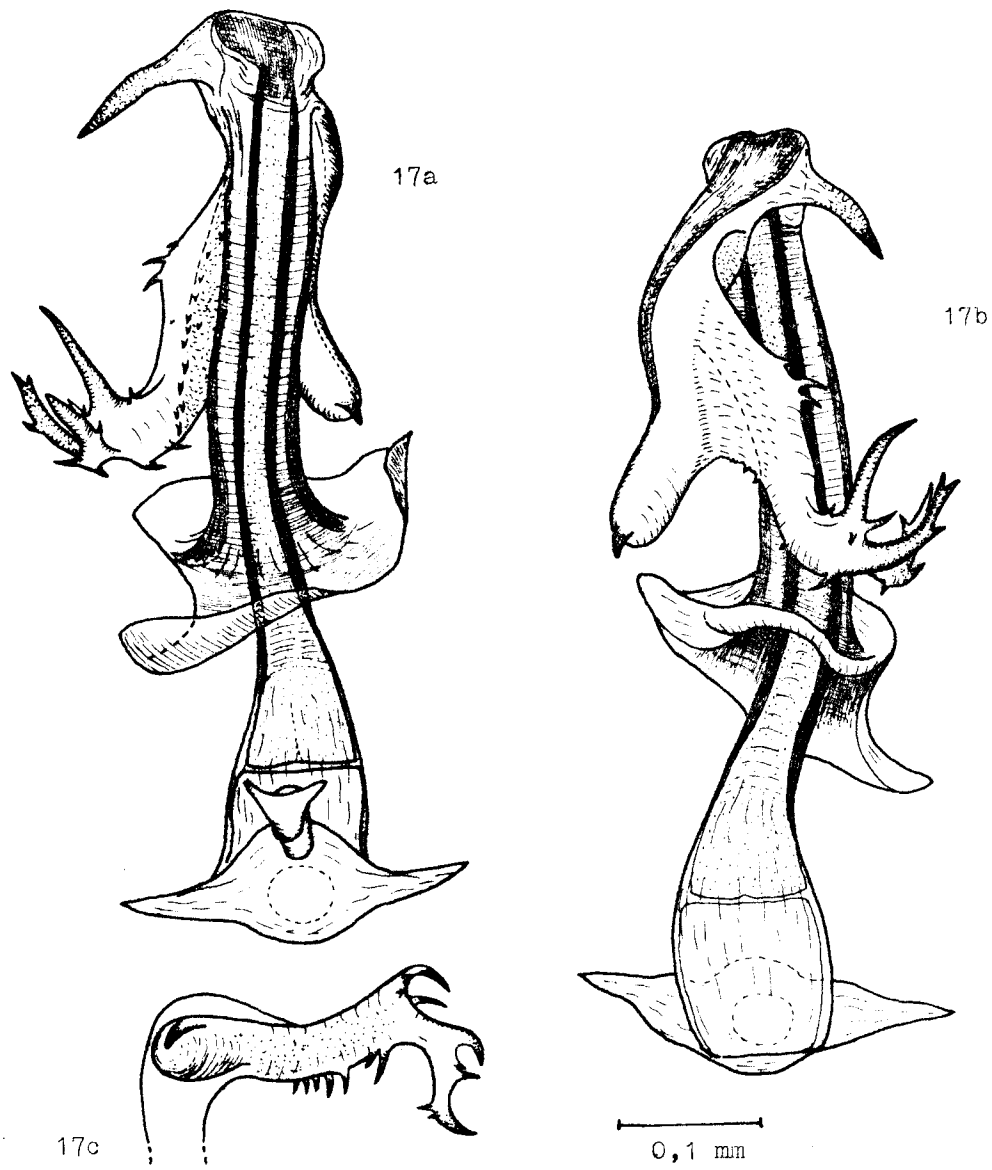


0,1 mm



Neopunana saba n.sp.

Abb. 16: Genitalarmatur ♂ (ohne Pygophor),  
links lateral



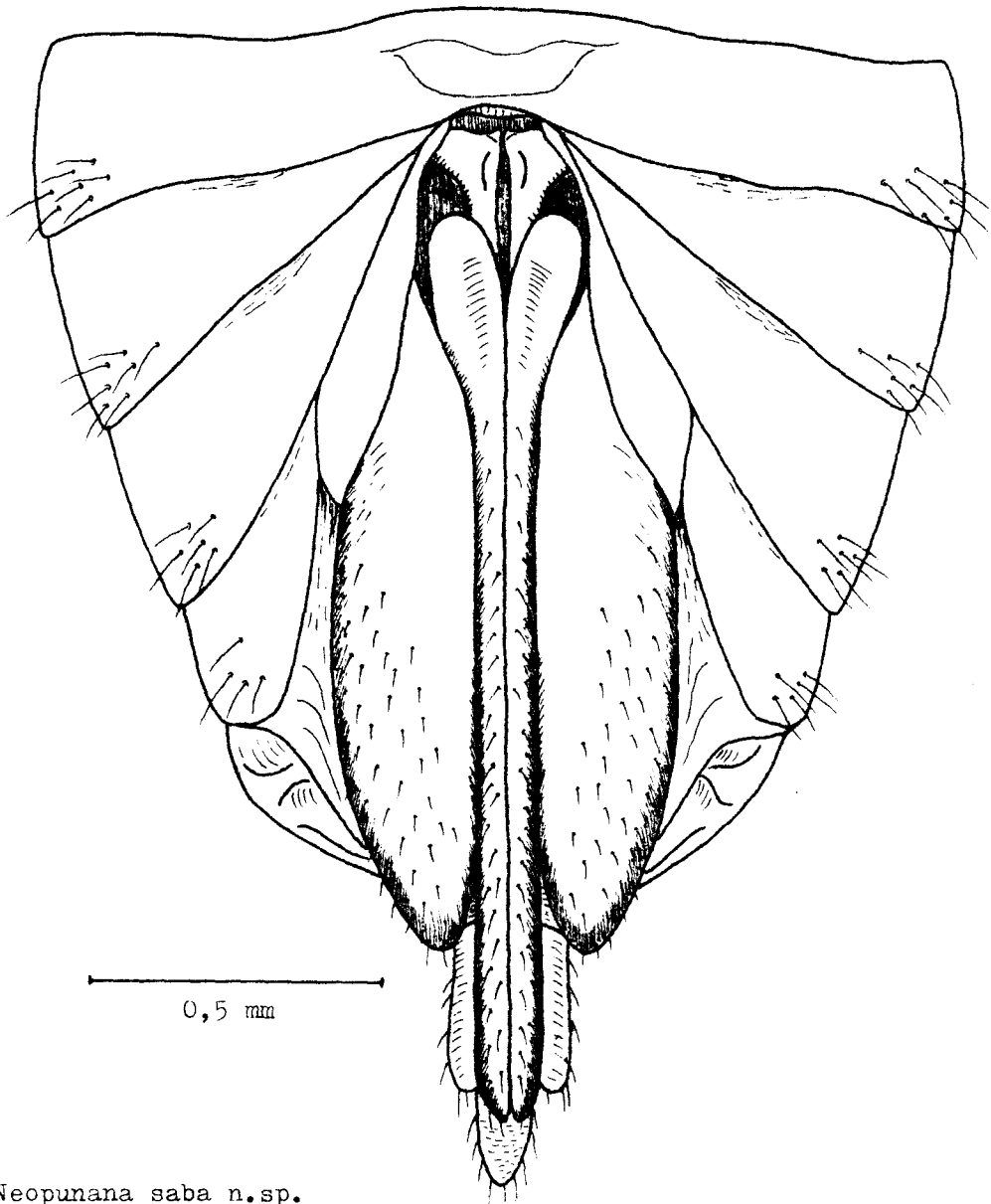
Neopunana saba n.sp.

Abb. 17: Aedeagus

a) ventral

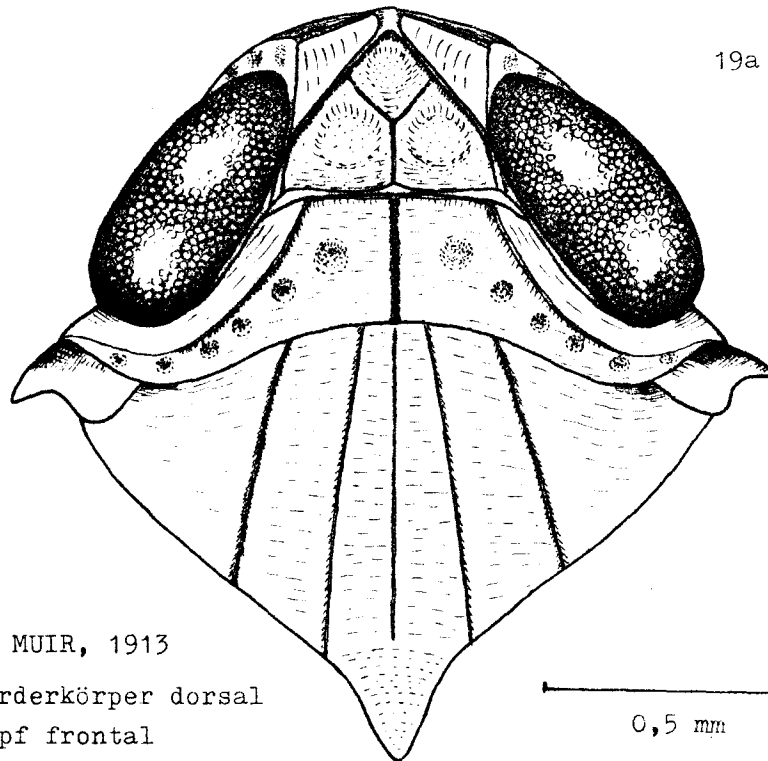
b) dorsal

c) Distalende des umgebogenen  
Endteils



*Neopunana saba* n.sp.

Abb. 18: Genitalarmatur ♀

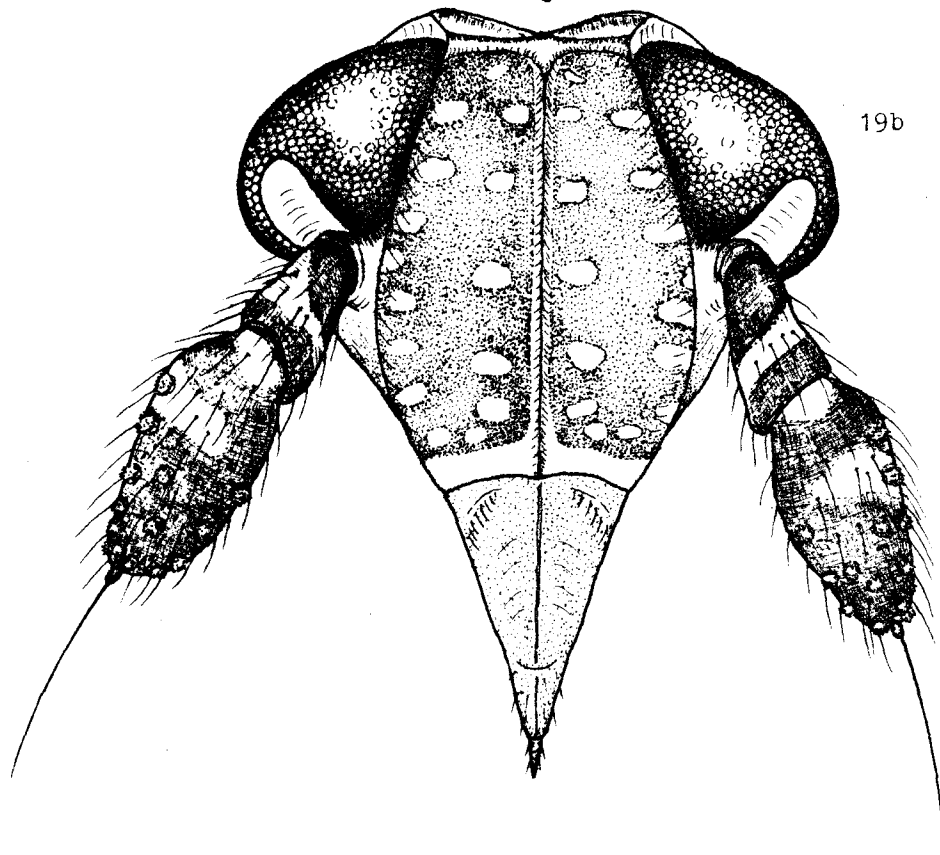


19a

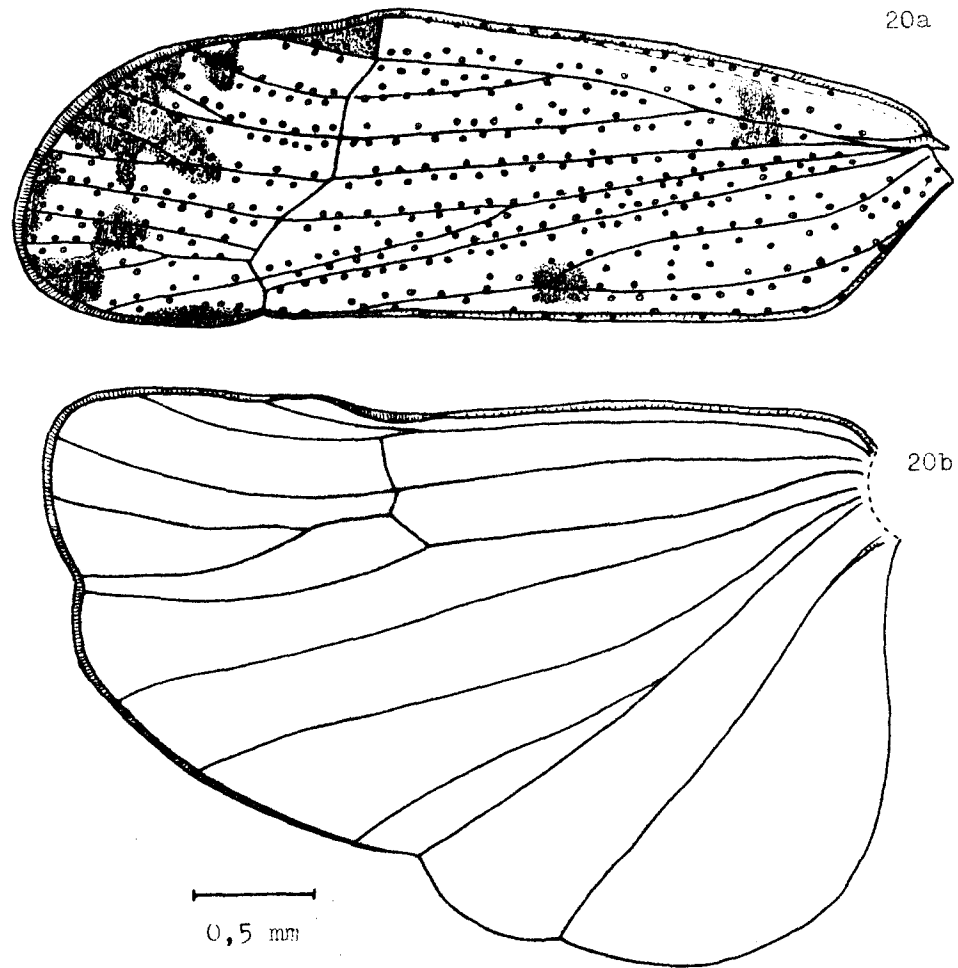
Punana brunnea MUIR, 1913

Abb. 19: a) Vorderkörper dorsal  
b) Kopf frontal

0,5 mm



19b



Punana brunnea MUIR, 1913

Abb. 20: Flugorgane

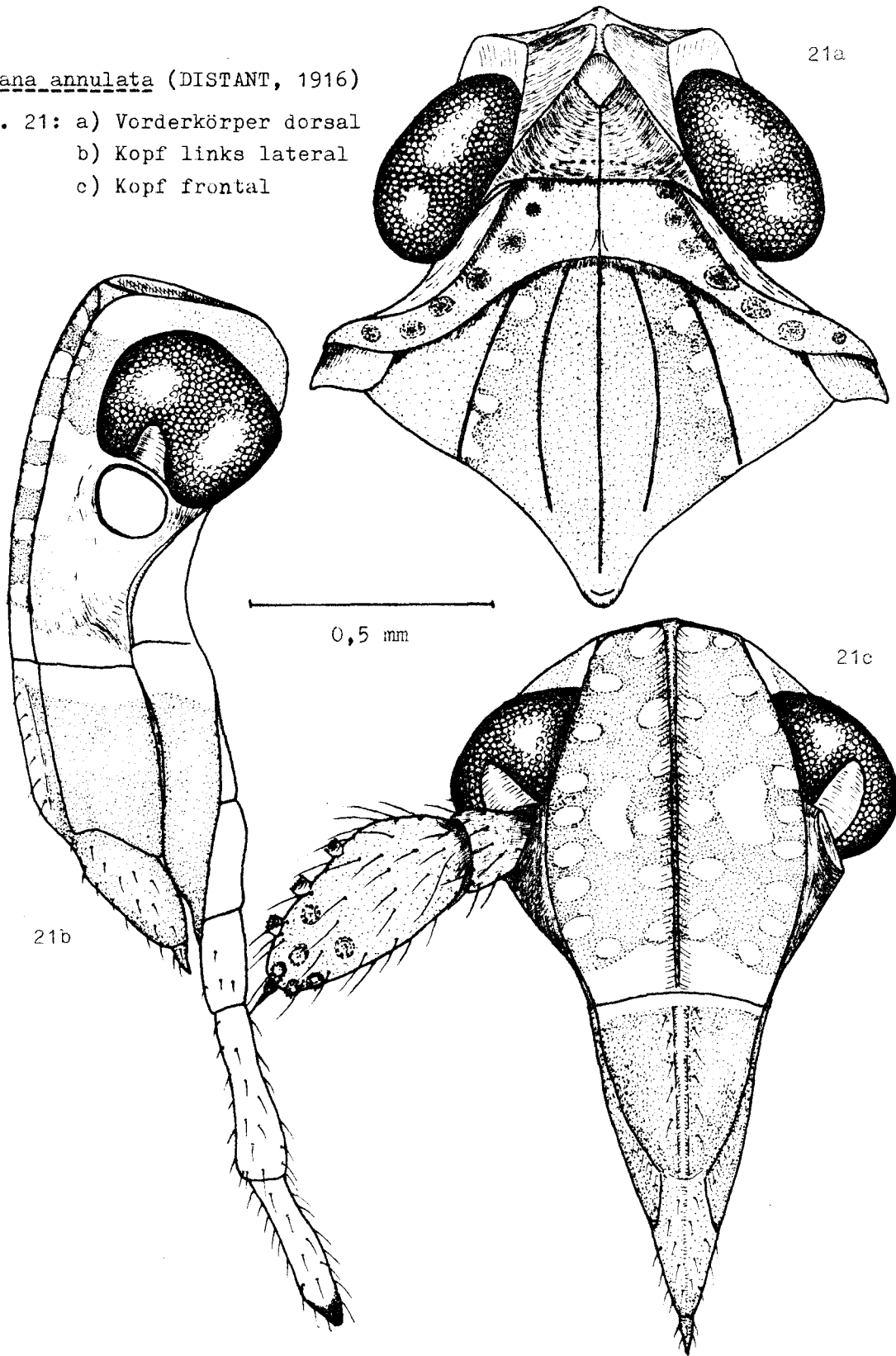
a) linker Vorderflügel

b) linker Hinterflügel



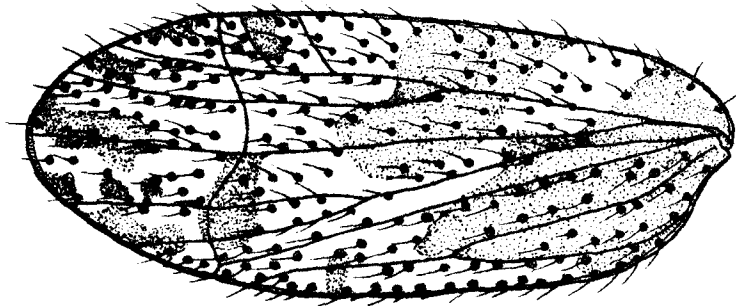
Punana annulata (DISTANT, 1916)

Abb. 21: a) Vorderkörper dorsal  
b) Kopf links lateral  
c) Kopf frontal

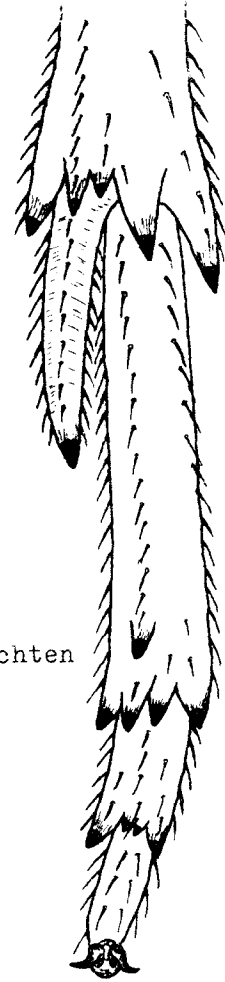


Punana annulata (DISTANT, 1916)

Abb. 22: linker Vorderflügel

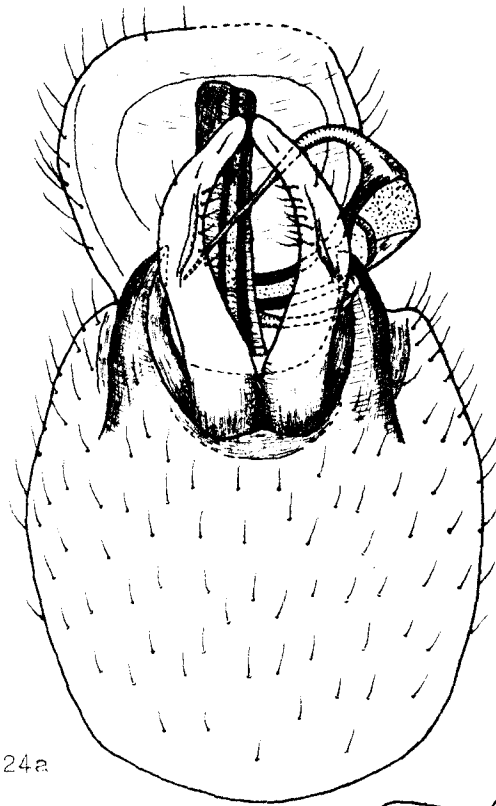


0,5 mm



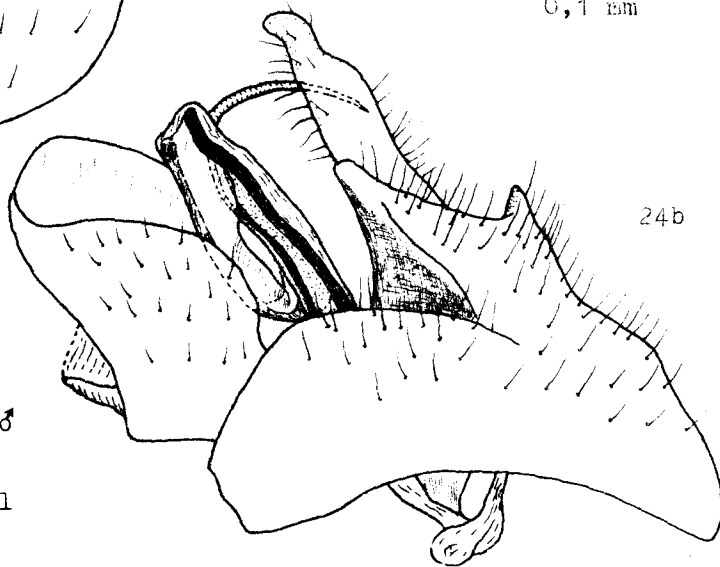
0,1 mm

Abb. 23:  
Distalende des rechten  
Hinterbeins



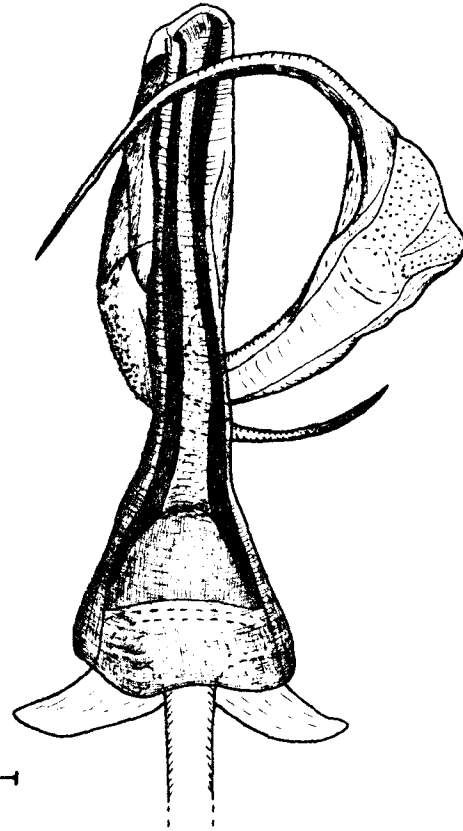
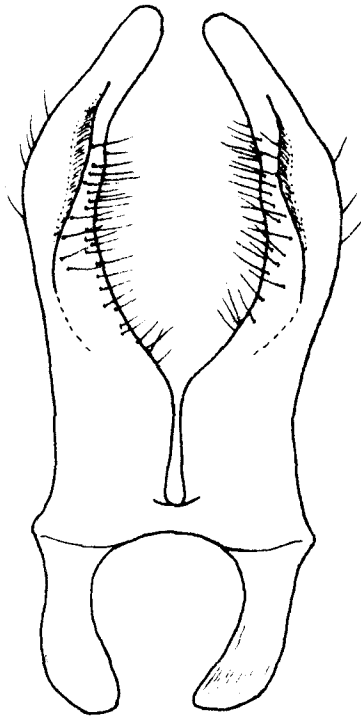
24a

0,1 mm



24b

Abb. 24: Genitalarmatur ♂  
a) ventrocaudal  
b) links lateral



0,1 mm

Punana annulata (DISTANT, 1916)

Abb. 25: Parameren ventral

Abb. 26: Aedeagus ventral

Anschrift des Verfassers:

Dipl.-Biol. Manfred Asche  
Fachbereich Biologie - Zoologie  
der Philipps-Universität Marburg  
Lahnberge, Postfach 1929  
D - 3550 MARBURG / Lahn  
Bundesrepublik Deutschland